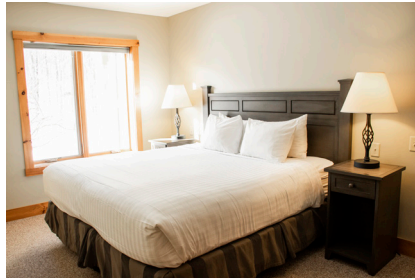


# THE START OF YOUR JAY PEAK ADVENTURE BEGINS AT JOURNEY'S END

Jay Peak is releasing a limited number of 1-, 2-, and 3-bedroom fully furnished condominiums for sale in the Journey's End property. The Long Trail building consists of 10 units, located on the main access road, just steps from the Tramside Base. Only 3 units are still immediately available for sale.



## JOURNEY'S END LONG TRAIL BUILDING

### AVAILABLE UNITS - 3

**\$269,900 LOWER LEVEL #4709**  
1 BEDROOM/1 BATHROOM UNIT | 781 SQ.FT.

**\$309,000 1ST FLOOR LEVEL #4707 ADA**  
1 BEDROOM/1 BATHROOM UNIT | 714 SQ.FT.

**\$599,000 1ST FLOOR LEVEL #4705**  
3 BEDROOM/3 BATHROOM UNIT | 1590 SQ.FT.

## JAY PEAK HOMEOWNER BENEFITS INCLUDE

- » Ski-in/Ski-out access.
- » Discounts to many Jay Peak services & amenities.  
Visit [jaypeakresort.com/HowToPow](http://jaypeakresort.com/HowToPow) for details.
- » An opportunity to participate in the Jay Peak Rental Program with Season Pass incentives.

# JAY PEAK RESORT

Jay Peak's Journey's End Condominiums provide the perfect home-base to recharge between one Jay Peak adventure ending and the next one beginning.

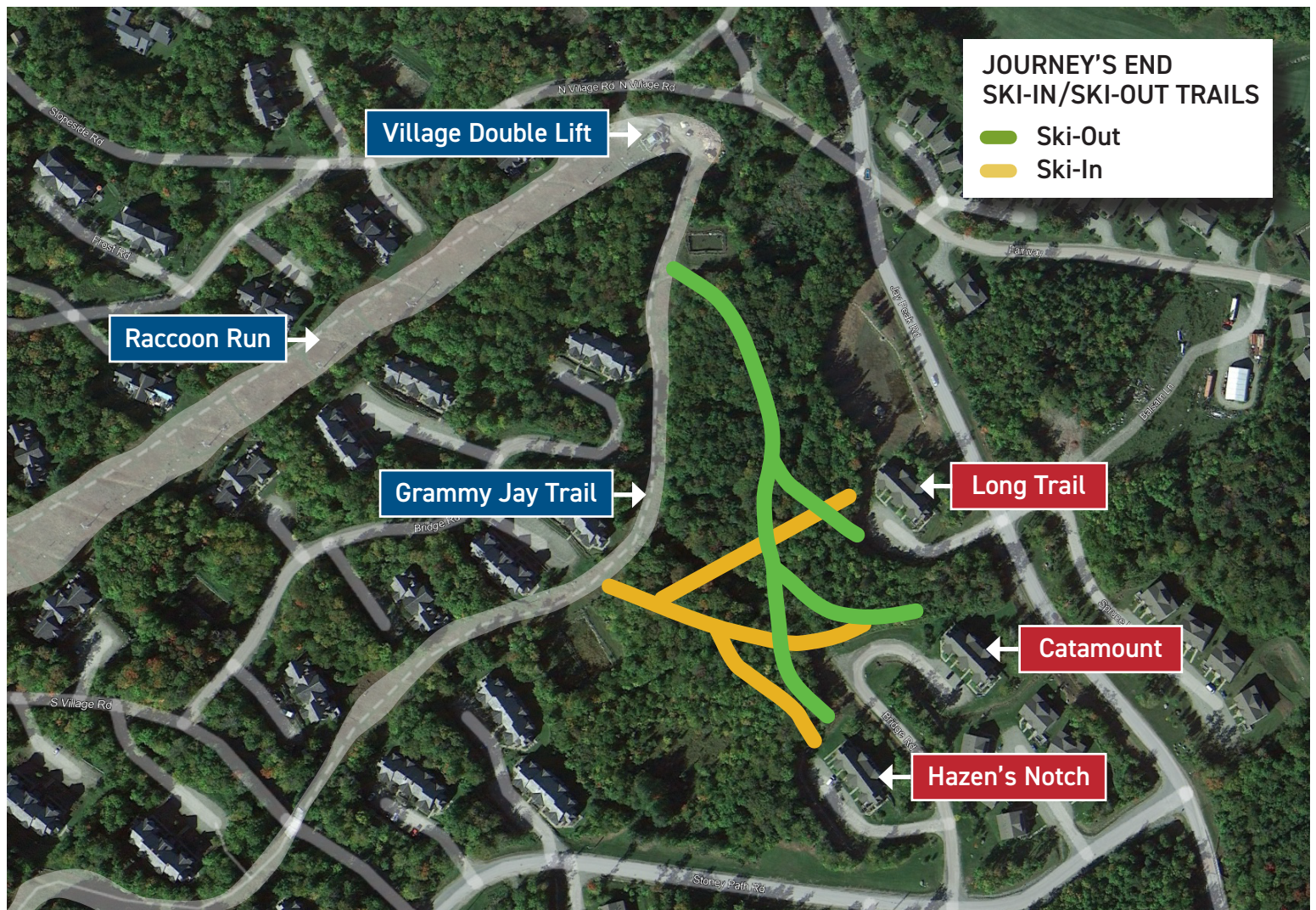


# SKI-IN/SKI-OUT TRAILS

## JOURNEY'S END

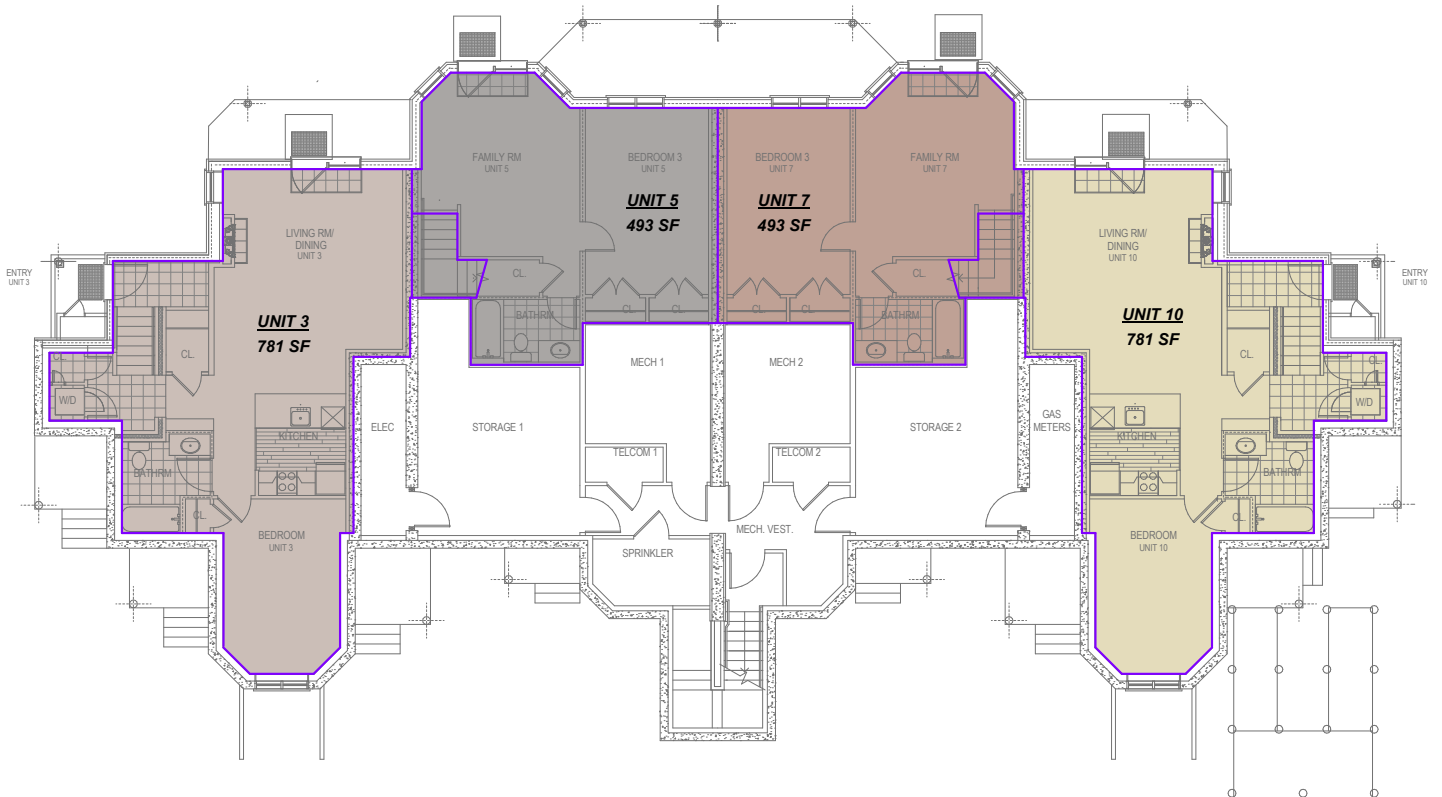
With the most snow in eastern North America to ride through, the 65,000 sq. ft. Pumphouse Indoor Waterpark, The Ice Haus Indoor Skating Arena, Clips and Reels Indoor Climbing, Arcade and Movie Theater, not to mention dozens of restaurants, coffee shops and eateries, 60km of Nordic skiing, 18 hole championship golf, and Taiga Spa, your choices of where to wear yourself out are not only endless, they're all right outside your front door.

The Journey's End Condominiums at Jay Peak; begin at The End to start writing your own Jay Peak adventure this season.



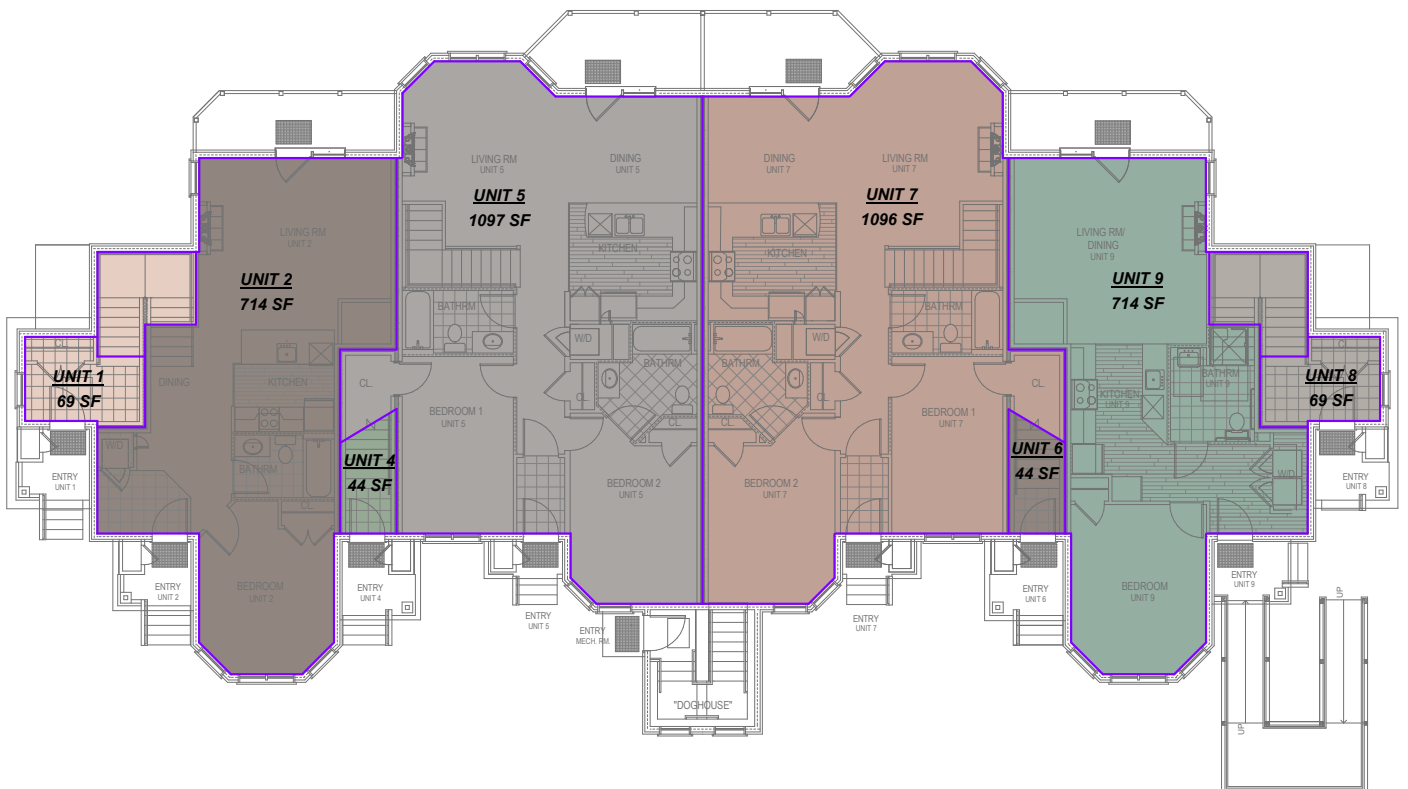
# LONG TRAIL CONDOMINIUMS (B-1)

## JOURNEY'S END: LOWER LEVEL



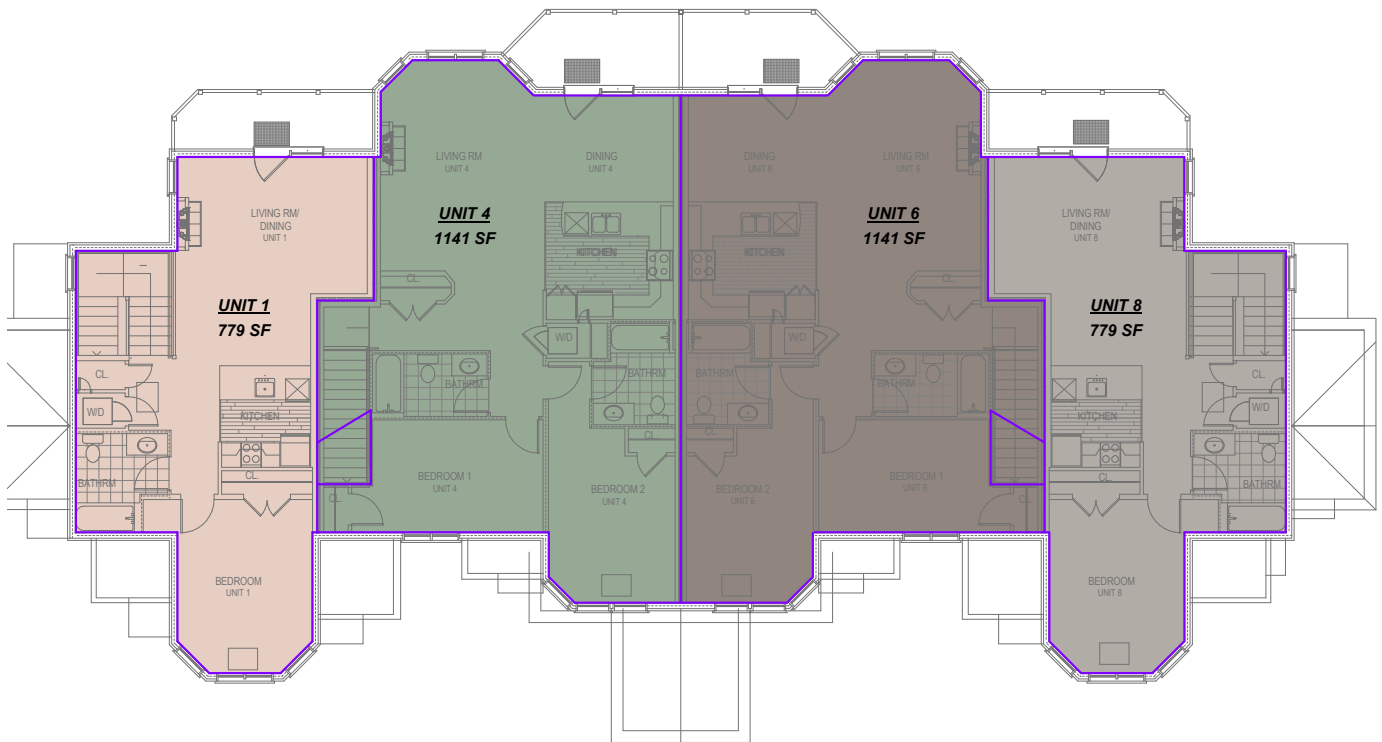
# LONG TRAIL CONDOMINIUMS (B-1)

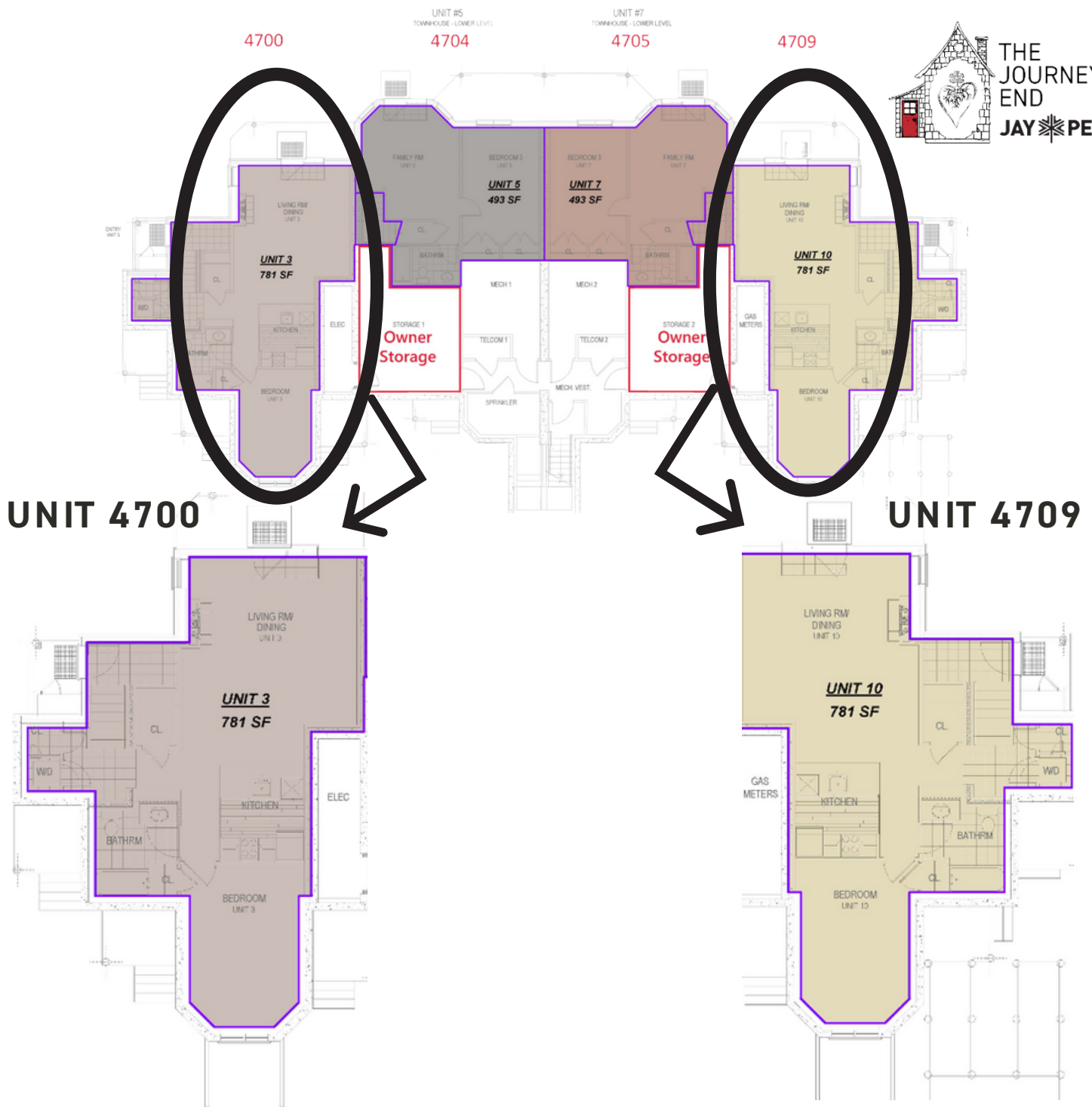
## JOURNEY'S END: FIRST FLOOR



# LONG TRAIL CONDOMINIUMS (B-1)

## JOURNEY'S END: SECOND FLOOR





## ESTIMATED EXPENSES FOR UNITS 4700 & 4709

1 Bedroom / 1 Bathroom – Lower Level – 781 Square Feet

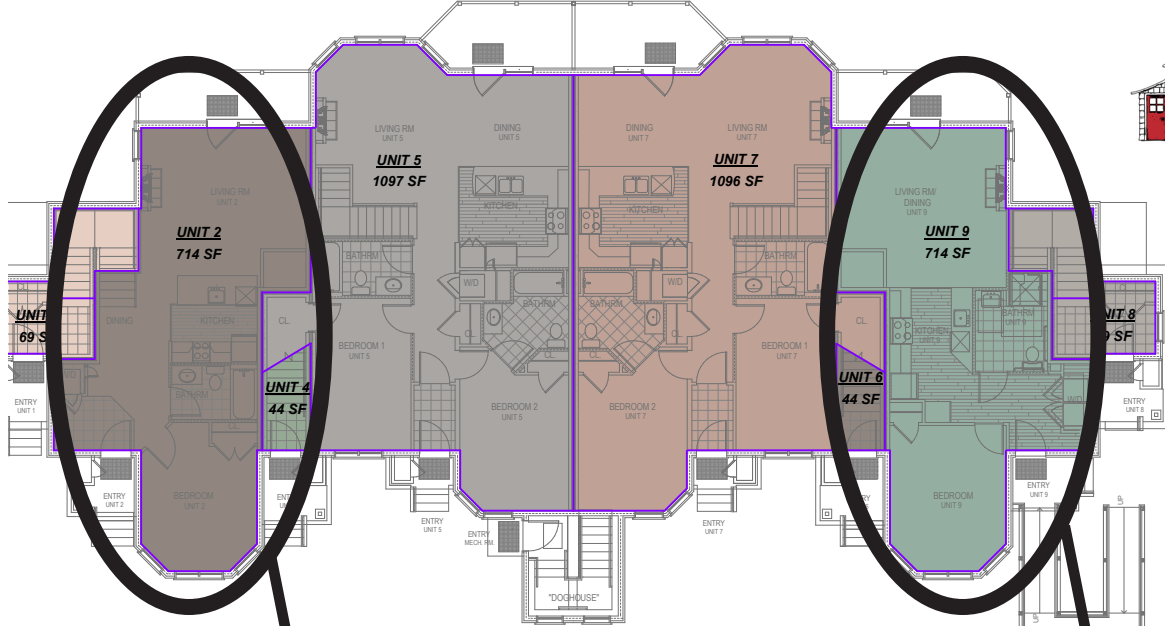
- Price: \$269,900
- Estimated Property Taxes: \$3,200–\$3,700 per year
- Estimated Association Fees: \$3,300–\$3,950 per year
- TV, Telephone, & Internet billed separately by Resort for \$88/month

UNIT #2  
FLAT  
4702

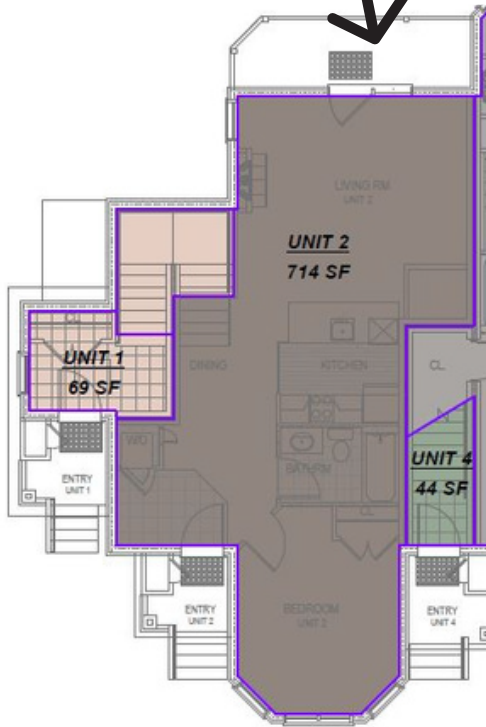
UNIT #5  
TOWNHOUSE - MAIN LEVEL  
4704

UNIT #7  
TOWNHOUSE - MAIN LEVEL  
4705

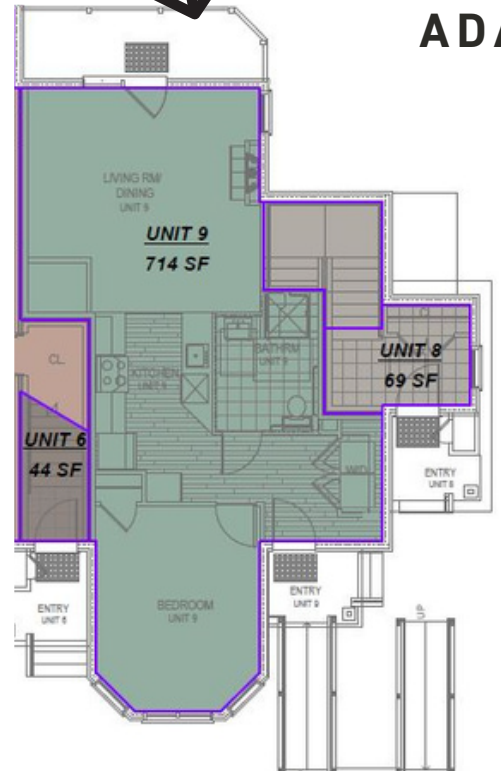
UNIT #9 (ADA)  
FLAT  
4707



**UNIT 4702**



**UNIT 4707  
ADA**



**ESTIMATED EXPENSES FOR UNITS 4702 & 4707 ADA**

1 Bedroom / 1 Bathroom – First Level – 714 Square Feet

- 4702 Price: \$339,000 • 4707 ADA Price: \$309,000
- Estimated Property Taxes: \$3,200–\$3,700 per year
- Estimated Association Fees: \$3,300–\$3,950 per year
- TV, Telephone, & Internet billed separately by Resort for \$88/month

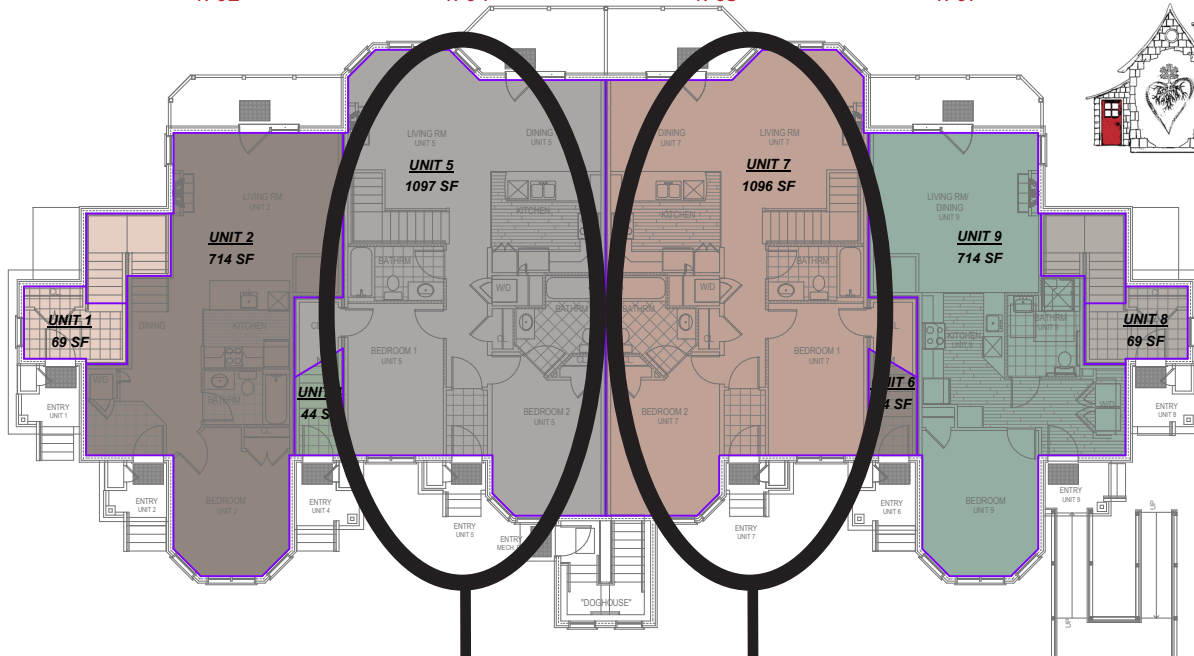


UNIT #2  
FLAT  
4702

UNIT #5  
TOWNHOUSE - MAIN LEVEL  
4704

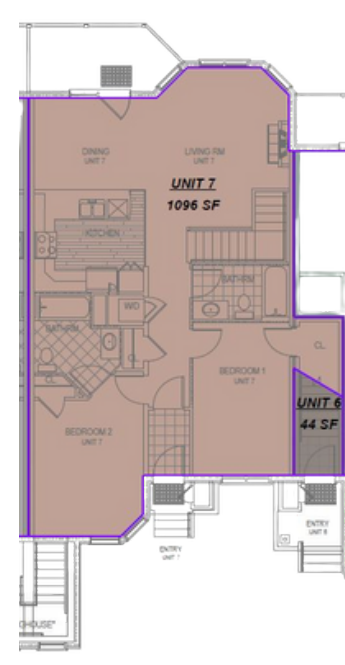
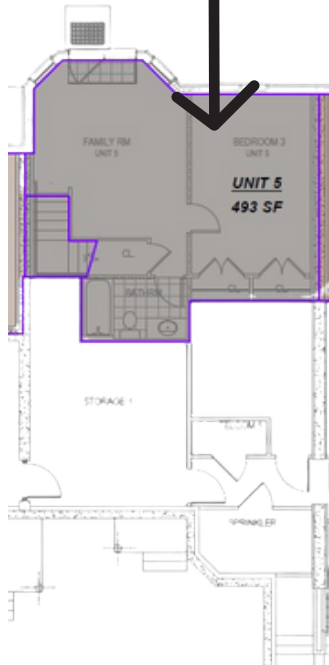
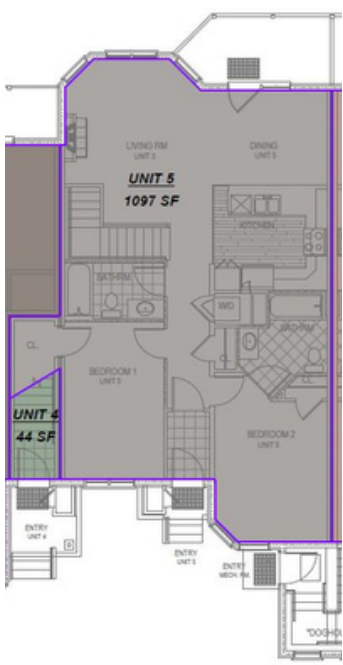
UNIT #7  
TOWNHOUSE - MAIN LEVEL  
4705

UNIT #9 (ADA)  
FLAT  
4707



**UNIT 4704**

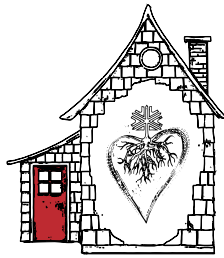
**UNIT 4705**



## ESTIMATED EXPENSES FOR UNITS 4704 & 4705

3 Bedroom / 3 Bathroom – First Level / Lower Level – 1,590 Square Feet

- Price: \$599,000
- Estimated Property Taxes: \$4,000-\$4,500 per year
- Estimated Association Fees: \$7,400 per year
- TV, Telephone, & Internet billed separately by Resort for \$88/month



THE  
JOURNEY'S  
END

JAY  PEAK



OFFERED AT  
**\$269,900**



## Long Trail Condominium 4709

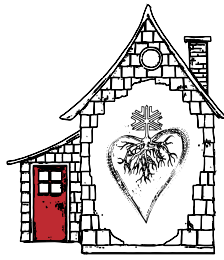
Jay Peak's Journey's End Condominiums provide the perfect home-base to recharge between one Jay Peak adventure ending and the next one beginning.

With the most snow in eastern North America to ride through, the 65,000 sf Pumphouse Indoor Waterpark, The Ice Haus Indoor Skating Arena, Clips and Reels Indoor Climbing, Arcade and Movie Theater, not to mention dozens of restaurants, coffee shops and eateries, 60km of Nordic skiing, 18 hole championship golf, and Taiga Spa, your choices of where to wear yourself out are not only endless, they're all right outside your front door.

The Journey's End Condominiums at Jay Peak; begin at The End to start writing your own Jay Peak adventure this season.

- Style: 1 Bed / 1 Bath
- Year Built: 2012
- Sq. Footage: 781
- Exterior: Pre-finished cement board clapboards, Cedar shingles on the gable ends and window bump-outs. Douglas fir decorative beams.
- Interior: Superior sound proofing between units (72 STC rating)
- Roof: Cambridge architectural shingles.
- Flooring: Carpet, tile and vinyl plank.
- Kitchen and Bathrooms: Granite countertops with Hickory cabinets.
- Windows: Marvin Integrity
- Fireplace: Propane fireplace with blower.
- Fully Furnished: appliances, furniture, bedding, towels, cookware and dinnerware.
- Storage: Unit comes with lockable owners closet in basement common area.
- Heating System: Propane fired boiler with radiant heat throughout.
- Septic: Municipal Sewer
- Water: Community
- Efficiency Vermont 5 Star+ Rated

**FOR INFO & TO RESERVE:** [realestate@jaypeakresort.com](mailto:realestate@jaypeakresort.com) | [jaypeakresort.com/journeysend](http://jaypeakresort.com/journeysend) | (802) 327-2100



THE  
JOURNEY'S  
END

JAY  PEAK



OFFERED AT  
**\$309,000**



## Long Trail Condominium 4707 - ADA

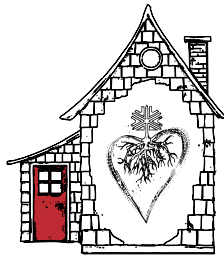
Jay Peak's Journey's End Condominiums provide the perfect home-base to recharge between one Jay Peak adventure ending and the next one beginning.

With the most snow in eastern North America to ride through, the 65,000 sf Pumphouse Indoor Waterpark, The Ice Haus Indoor Skating Arena, Clips and Reels Indoor Climbing, Arcade and Movie Theater, not to mention dozens of restaurants, coffee shops and eateries, 60km of Nordic skiing, 18 hole championship golf, and Taiga Spa, your choices of where to wear yourself out are not only endless, they're all right outside your front door.

The Journey's End Condominiums at Jay Peak; begin at The End to start writing your own Jay Peak adventure this season.

- Style: 1 Bed / 1 Bath
- Year Built: 2012
- Sq. Footage: 714
- Exterior: Pre-finished cement board clapboards, Cedar shingles on the gable ends and window bump-outs. Douglas fir decorative beams.
- Interior: Superior sound proofing between units (72 STC rating)
- Roof: Cambridge architectural shingles.
- Flooring: Carpet, tile and vinyl plank.
- Kitchen and Bathrooms: Granite countertops with Hickory cabinets.
- Windows: Marvin Integrity
- Fireplace: Propane fireplace with blower.
- Fully Furnished: appliances, furniture, bedding, towels, cookware and dinnerware.
- Storage: Unit comes with lockable owners closet in basement common area.
- Heating System: Propane fired boiler with radiant heat throughout.
- Septic: Municipal Sewer
- Water: Community
- Efficiency Vermont 5 Star+ Rated

**FOR INFO & TO RESERVE:** [realestate@jaypeakresort.com](mailto:realestate@jaypeakresort.com) | [jaypeakresort.com/journeysend](http://jaypeakresort.com/journeysend) | (802) 327-2100



THE  
JOURNEY'S  
END

JAY  PEAK



OFFERED AT  
**\$599,000**



## Long Trail Condominium 4705

Jay Peak's Journey's End Condominiums provide the perfect home-base to recharge between one Jay Peak adventure ending and the next one beginning.

With the most snow in eastern North America to ride through, the 65,000 sf Pumphouse Indoor Waterpark, The Ice Haus Indoor Skating Arena, Clips and Reels Indoor Climbing, Arcade and Movie Theater, not to mention dozens of restaurants, coffee shops and eateries, 60km of Nordic skiing, 18 hole championship golf, and Taiga Spa, your choices of where to wear yourself out are not only endless, they're all right outside your front door.

The Journey's End Condominiums at Jay Peak; begin at The End to start writing your own Jay Peak adventure this season.

- Style: 3 Bed / 3 Bath
- Year Built: 2012
- Sq. Footage: 1,590
- Exterior: Pre-finished cement board clapboards, Cedar shingles on the gable ends and window bump-outs. Douglas fir decorative beams.
- Interior: Superior sound proofing between units (72 STC rating)
- Roof: Cambridge architectural shingles.
- Flooring: Carpet, tile and vinyl plank.
- Kitchen and Bathrooms: Granite countertops with Hickory cabinets.
- Windows: Marvin Integrity
- Fireplace: Propane fireplace with blower.
- Fully Furnished: appliances, furniture, bedding, towels, cookware and dinnerware.
- Storage: Unit comes with lockable owners closet in basement common area.
- Heating System: Propane fired boiler with radiant heat throughout.
- Septic: Municipal Sewer
- Water: Community
- Efficiency Vermont 5 Star+ Rated

**FOR INFO & TO RESERVE:** [realestate@jaypeakresort.com](mailto:realestate@jaypeakresort.com) | [jaypeakresort.com/journeysend](http://jaypeakresort.com/journeysend) | (802) 327-2100