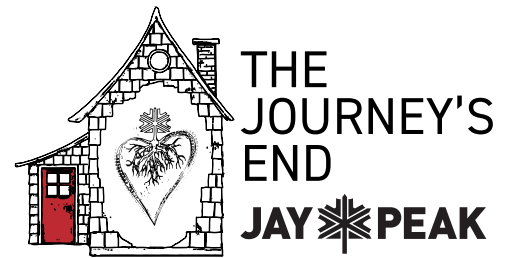


THE START OF YOUR JAY PEAK ADVENTURE BEGINS AT JOURNEY'S END

Jay Peak is releasing a limited number of 1-, 2-, and 3-bedroom fully furnished condominiums for sale in the Journey's End property. The Hazen's Notch building consists of 10 units, located on the main access road, just steps from the Tramside Base.



JOURNEY'S END HAZEN'S NOTCH BUILDING

\$269,900 LOWER LEVEL #4752 & #4761
1 BEDROOM/1 BATHROOM UNIT | 781 SQ.FT.

\$339,000 2ND FLOOR LEVEL #4753 & #4760
1 BEDROOM/1 BATHROOM UNIT | 848 SQ.FT.

\$339,000 1ST FLOOR LEVEL #4754
1 BEDROOM/1 BATHROOM UNIT | 714 SQ.FT.

\$309,000 1ST FLOOR LEVEL #4759 ADA
1 BEDROOM/1 BATHROOM UNIT | 714 SQ.FT.

\$429,000 2ND FLOOR LEVEL #4755 & #4758
2 BEDROOM/2 BATHROOM UNIT | 1185 SQ.FT.

\$599,000 1ST FLOOR LEVEL #4756 & #4757
3 BEDROOM/3 BATHROOM UNIT | 1590 SQ.FT.

JAY PEAK HOMEOWNER BENEFITS INCLUDE

- » Ski-in/Ski-out access.
- » Discounts to many Jay Peak services & amenities.
Visit jaypeakresort.com/HowToPow for details.
- » An opportunity to participate in the Jay Peak Rental Program with Season Pass incentives.

FOR INFO & TO RESERVE: realestate@jaypeakresort.com | jaypeakresort.com/journeysend | (802) 327-2100

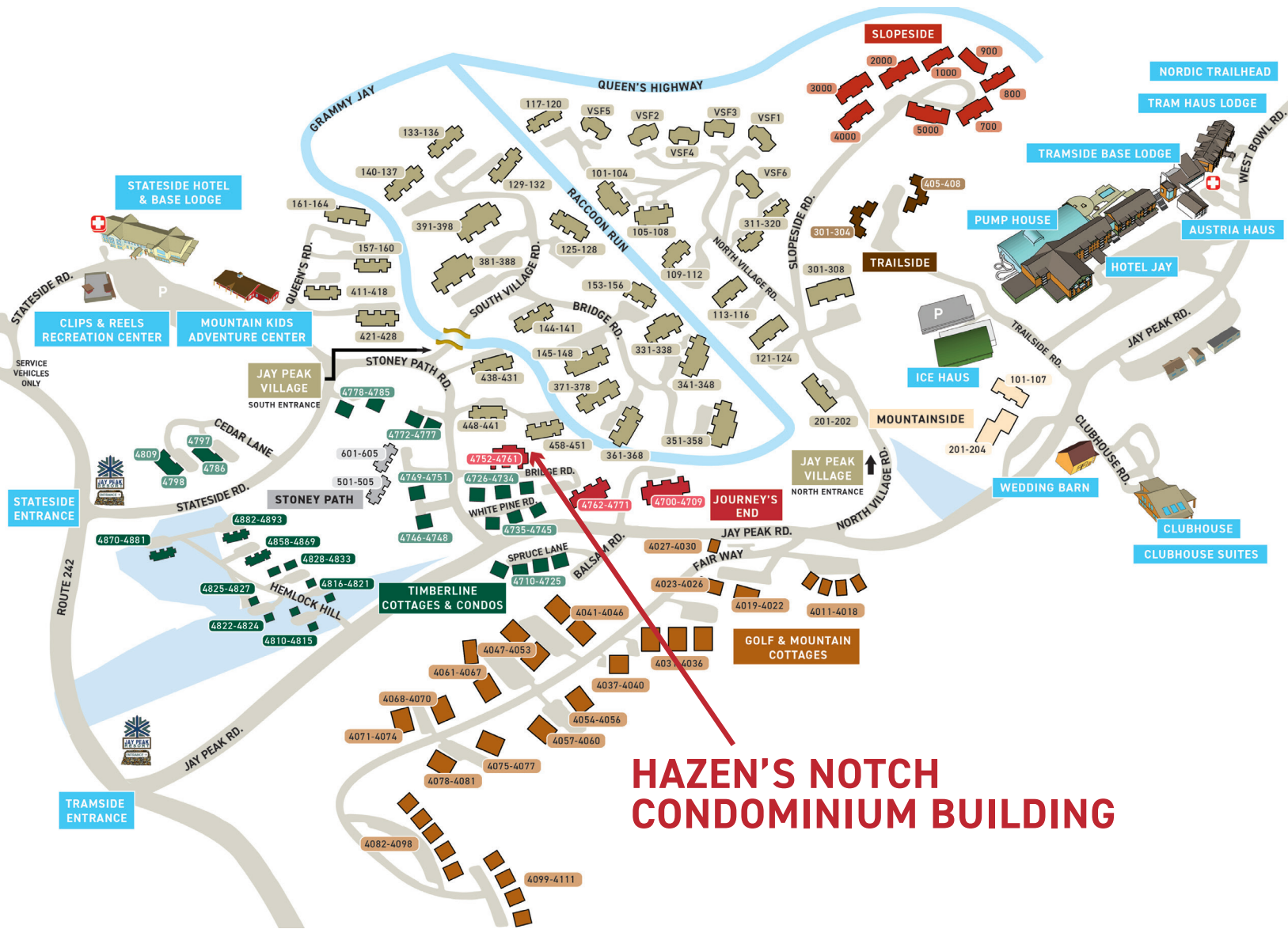
JAY PEAK RESORT

JOURNEY'S END

Jay Peak's Journey's End Condominiums provide the perfect home-base to recharge between one Jay Peak adventure ending and the next one beginning.



THE JOURNEY'S
END
JAY PEAK



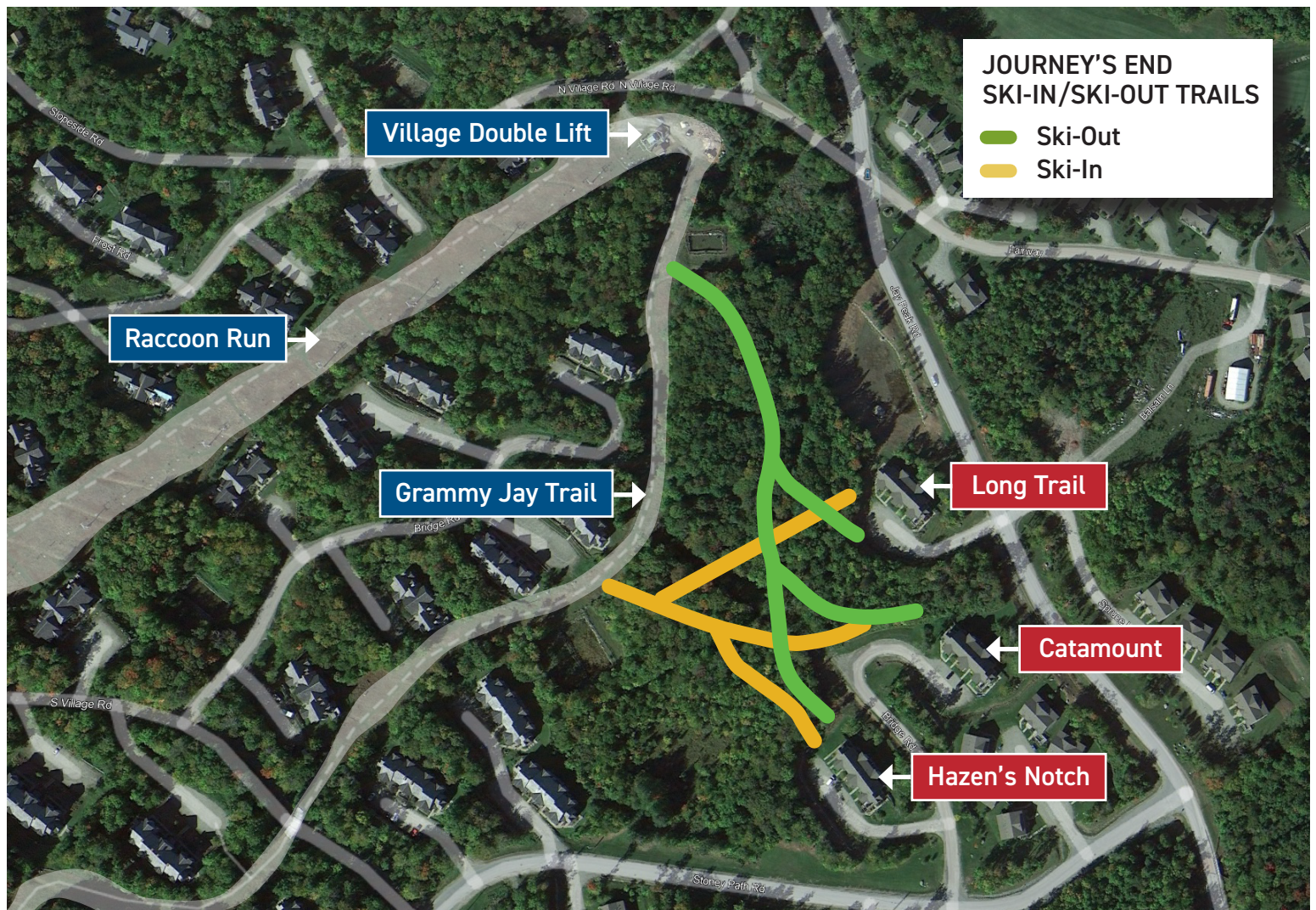
SKI-IN/SKI-OUT TRAILS

JOURNEY'S END



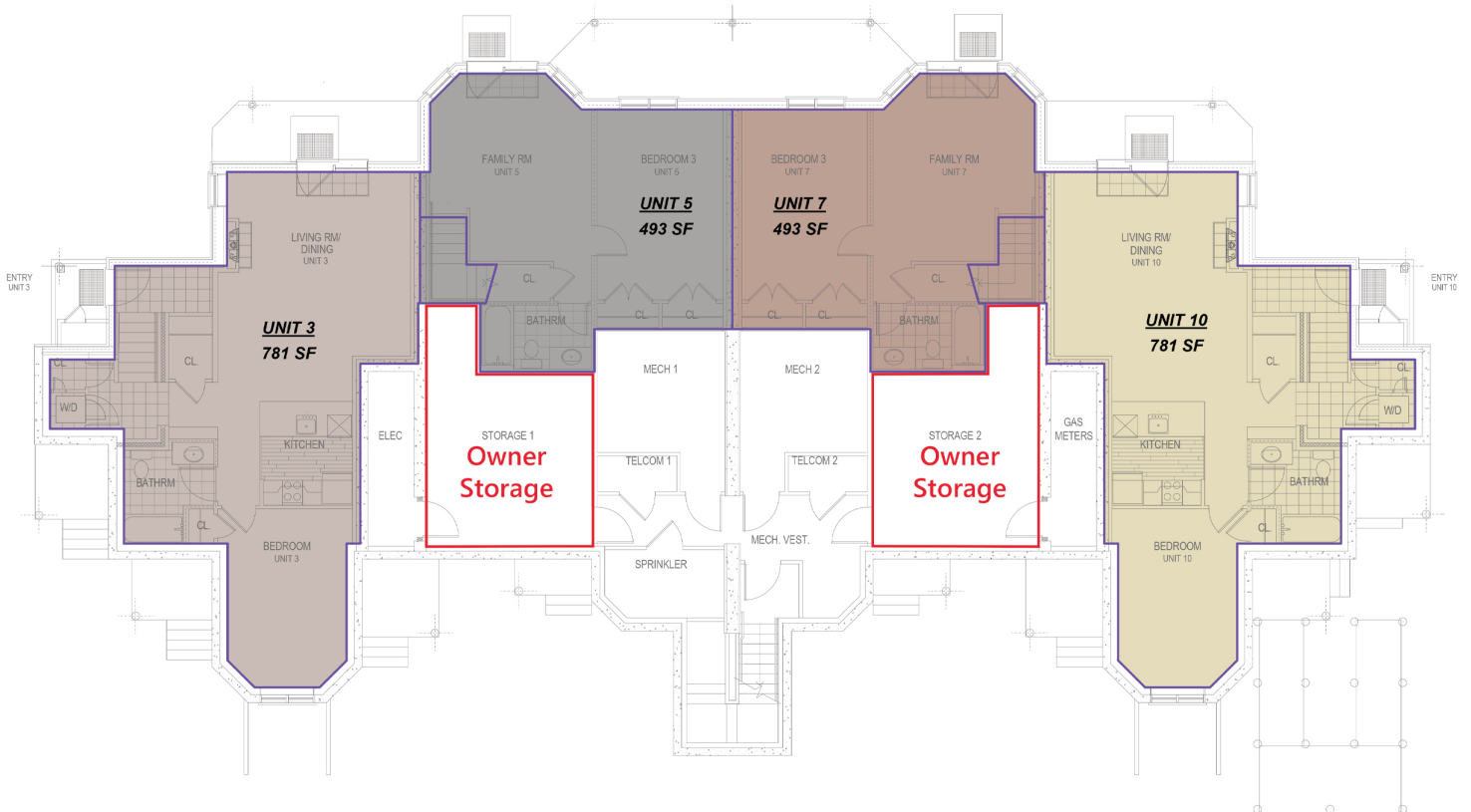
With the most snow in eastern North America to ride through, the 65,000 sq. ft. Pumphouse Indoor Waterpark, The Ice Haus Indoor Skating Arena, Clips and Reels Indoor Climbing, Arcade and Movie Theater, not to mention dozens of restaurants, coffee shops and eateries, 60km of Nordic skiing, 18 hole championship golf, and Taiga Spa, your choices of where to wear yourself out are not only endless, they're all right outside your front door.

The Journey's End Condominiums at Jay Peak; begin at The End to start writing your own Jay Peak adventure this season.



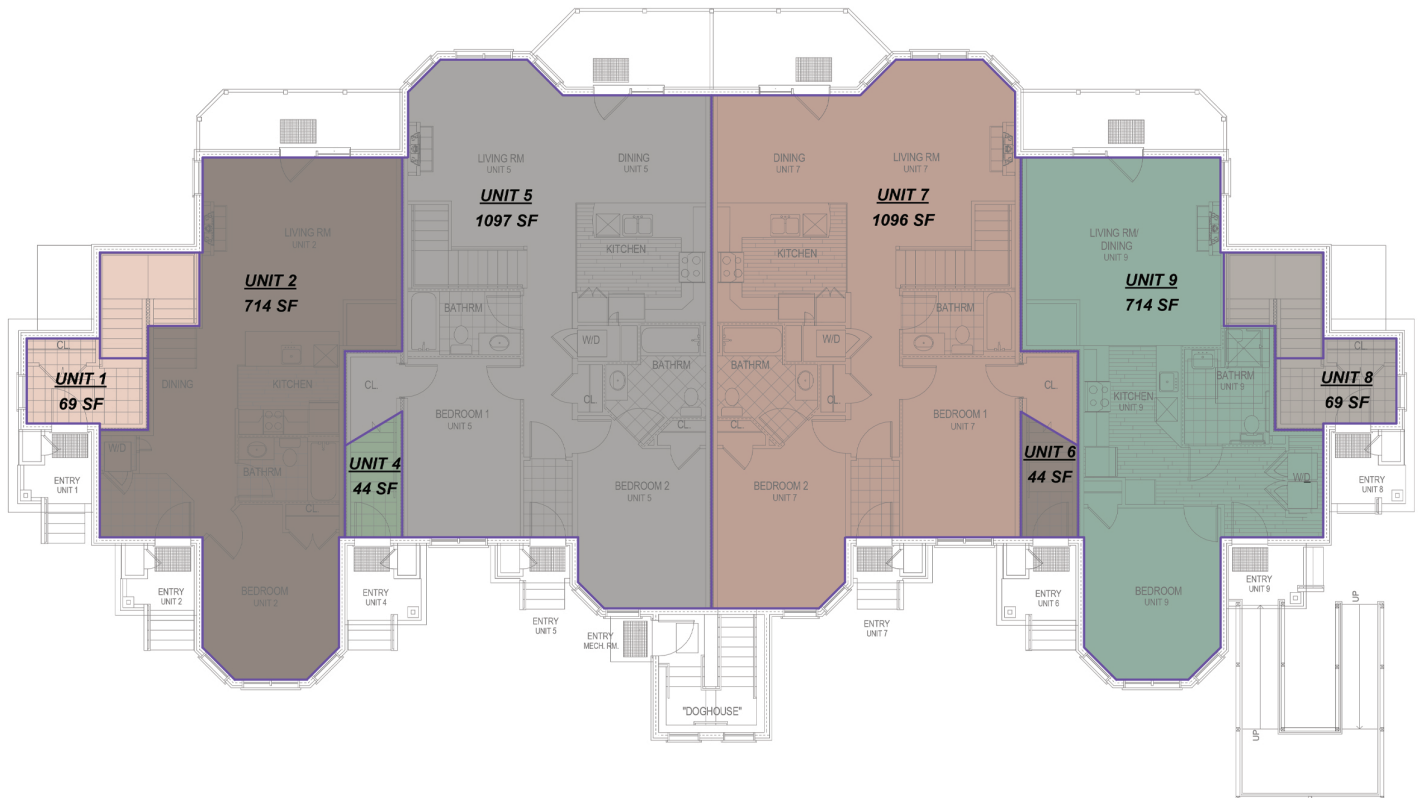
HAZEN'S NOTCH CONDOMINIUMS (C-1)

JOURNEY'S END: LOWER LEVEL



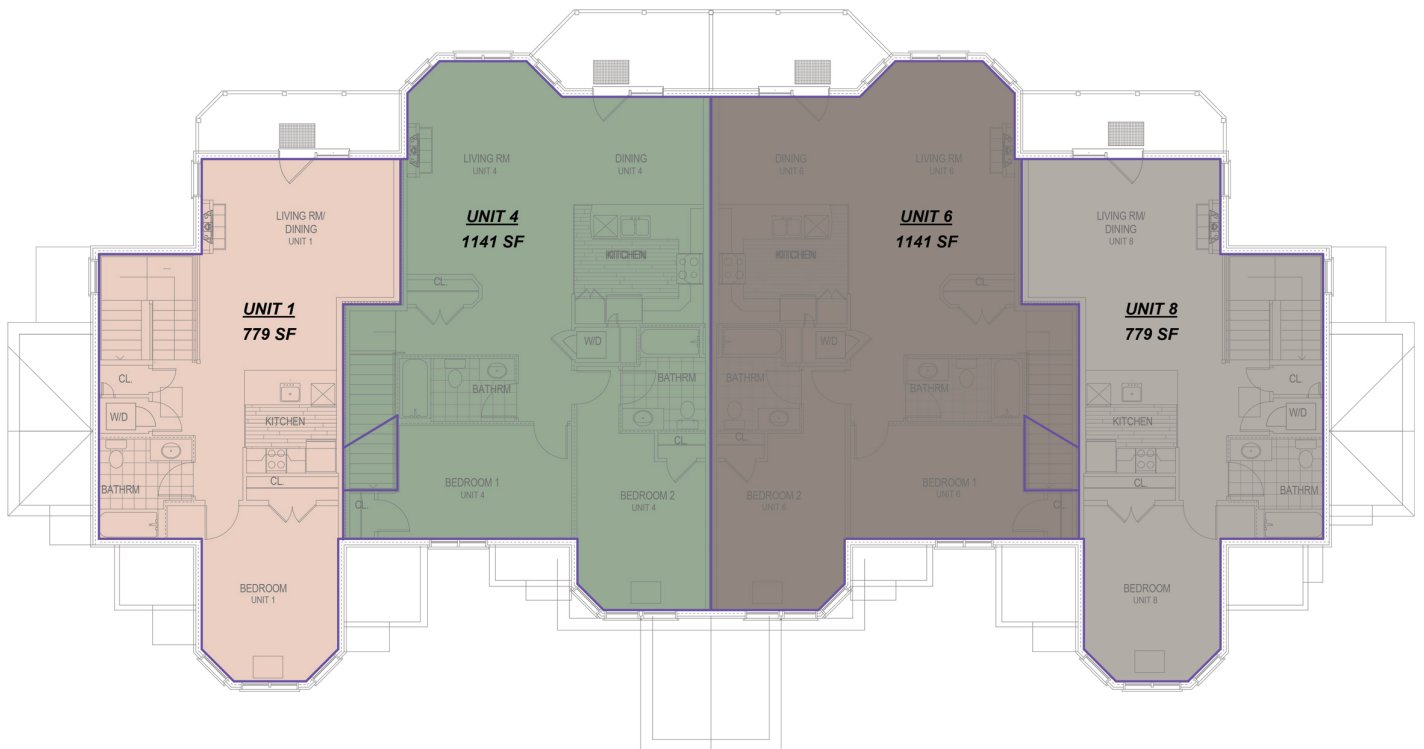
HAZEN'S NOTCH CONDOMINIUMS (C-1)

JOURNEY'S END: FIRST FLOOR



HAZEN'S NOTCH CONDOMINIUMS (C-1)

JOURNEY'S END: SECOND FLOOR

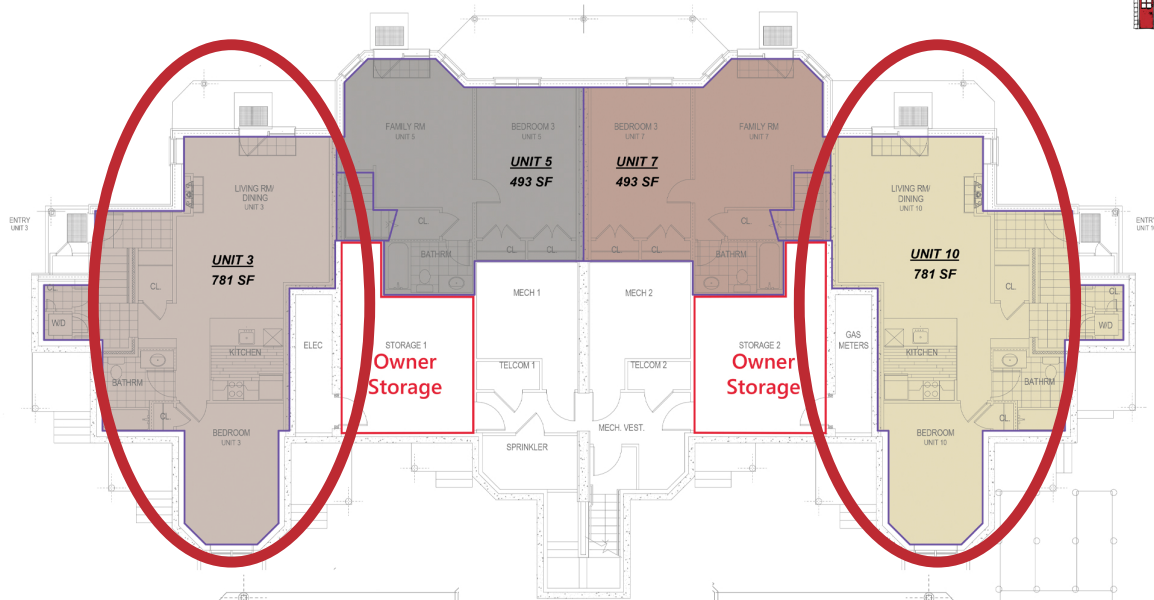


4752

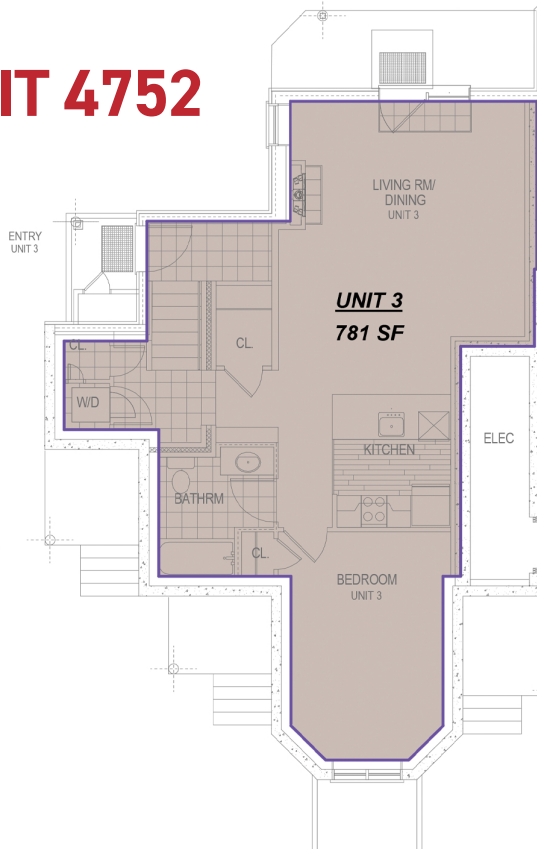
4756

4757

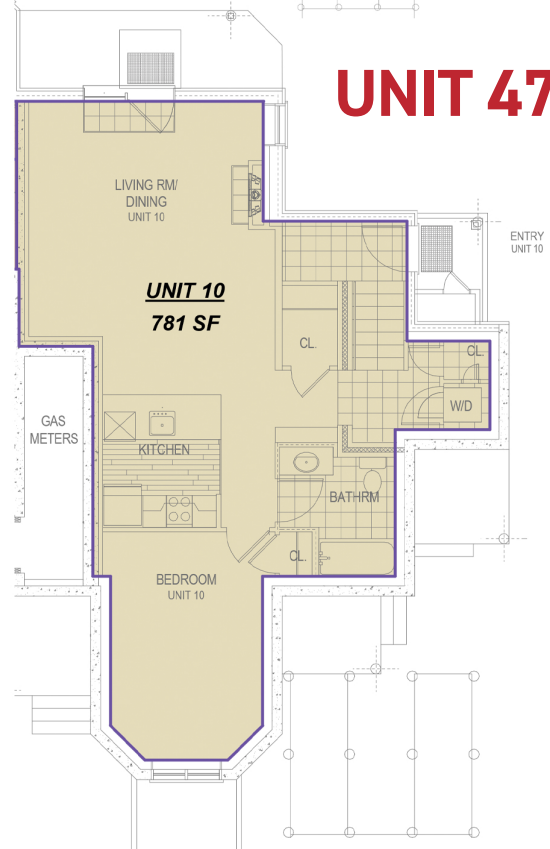
4761



UNIT 4752



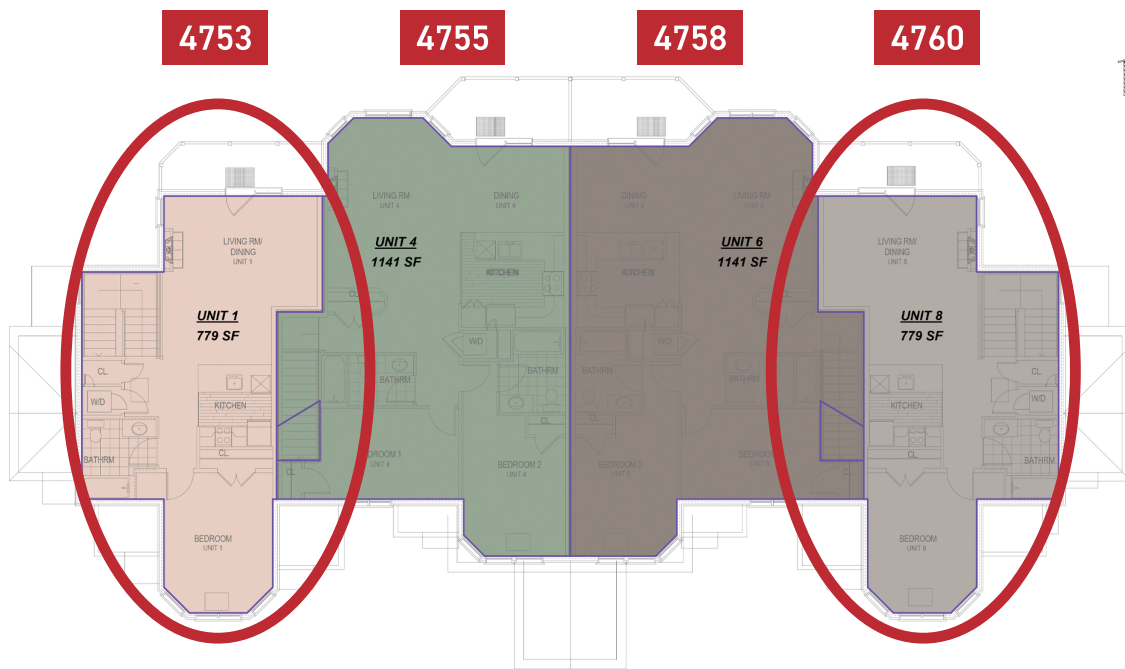
UNIT 4761



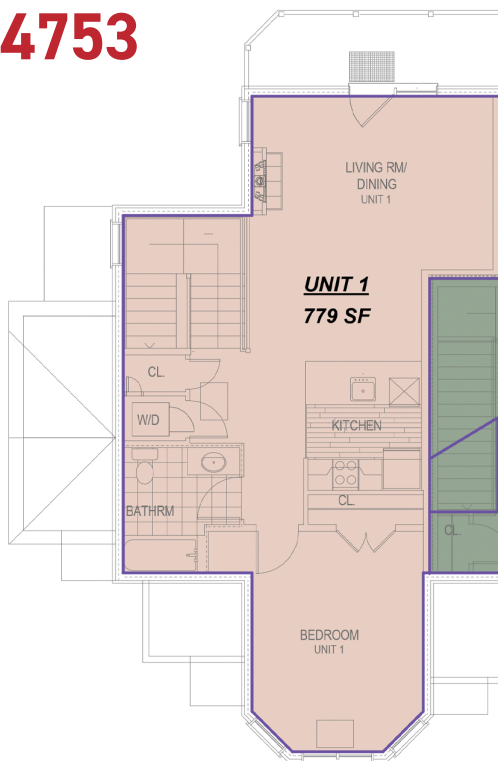
ESTIMATED EXPENSES FOR UNITS 4752 & 4761

1 Bedroom / 1 Bathroom – Lower Level – 781 Square Feet

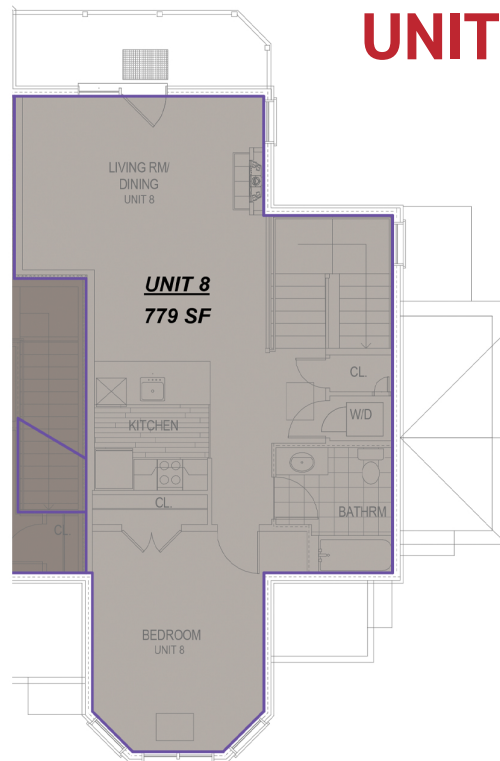
- Price: \$269,900
- Estimated Property Taxes: \$3,200–\$3,700 per year
- Estimated Association Fees: \$3,300–\$3,950 per year
- TV, Telephone, & Internet billed separately by Resort for \$88/month



UNIT 4753



UNIT 4760



ESTIMATED EXPENSES FOR UNITS 4753 & 4760

1 Bedroom / 1 Bathroom – Lower Level – 848 Square Feet

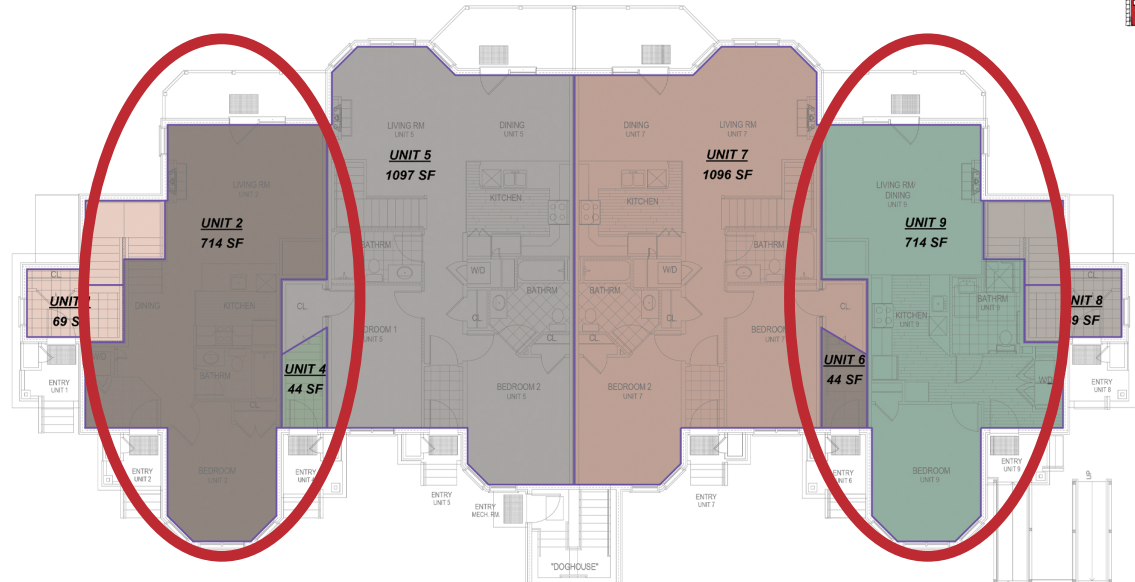
- Price: \$339,000
- Estimated Property Taxes: \$3,200–\$3,700 per year
- Estimated Association Fees: \$3,300–\$3,950 per year
- TV, Telephone, & Internet billed separately by Resort for \$88/month

4754

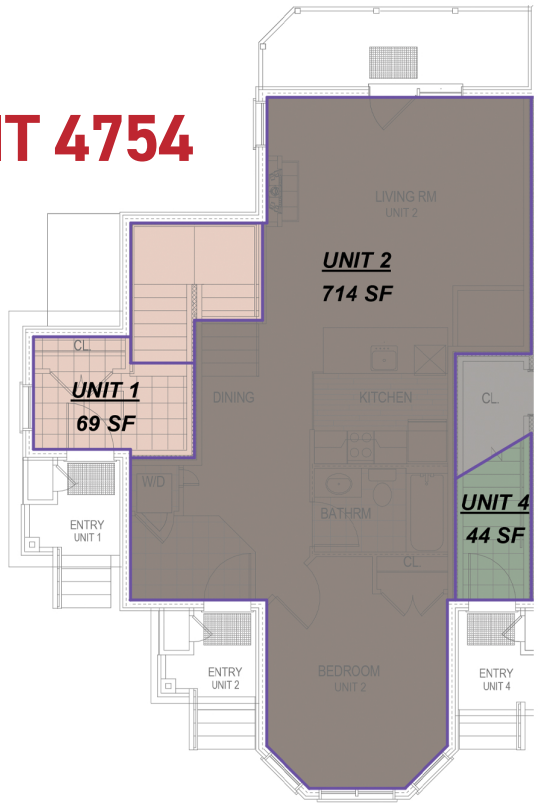
4756

4757

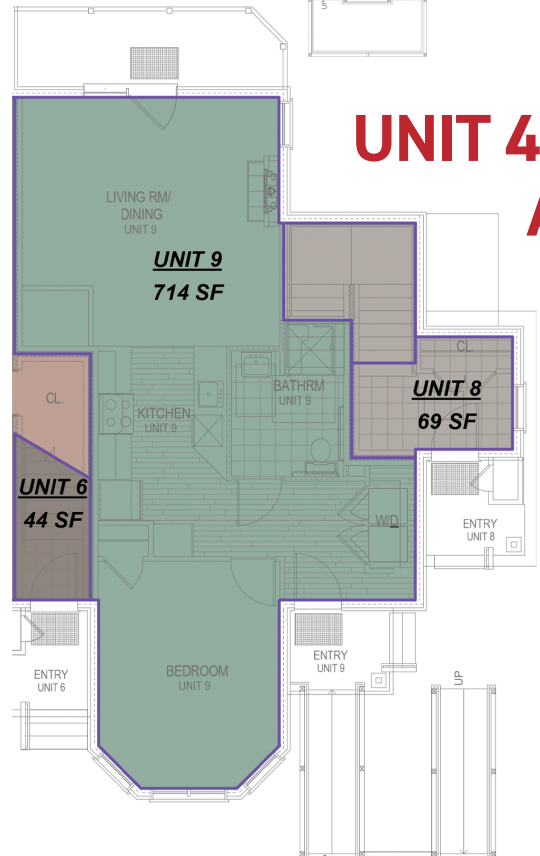
4759 ADA



UNIT 4754



UNIT 4759 ADA



ESTIMATED EXPENSES FOR UNITS 4754 & 4759 ADA
 1 Bedroom / 1 Bathroom – First Level – 714 Square Feet

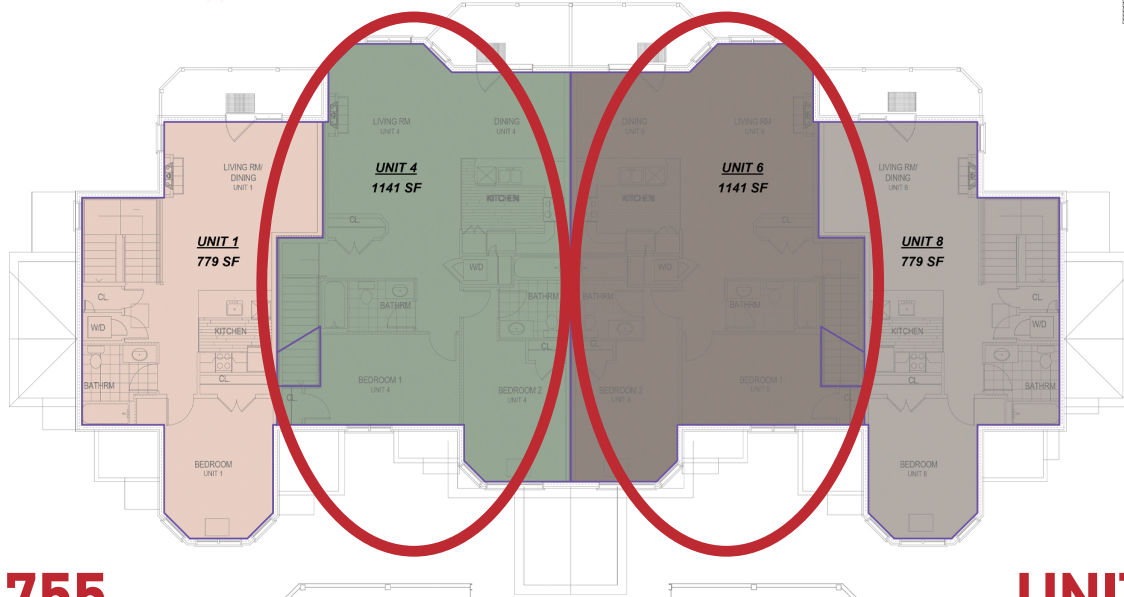
- 4754 Price: \$339,000 • 4759 ADA Price: \$309,000
- Estimated Property Taxes: \$3,200–\$3,700 per year
- Estimated Association Fees: \$3,300–\$3,950 per year
- TV, Telephone, & Internet billed separately by Resort for \$88/month

4753

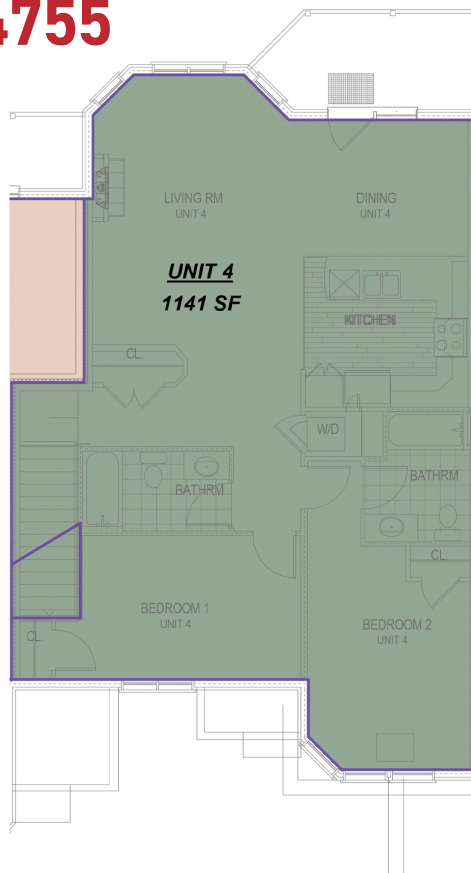
4755

4758

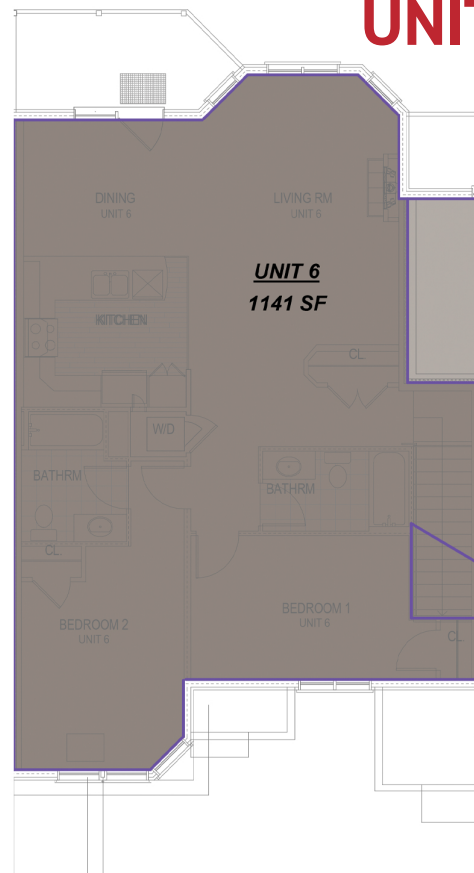
4760



UNIT 4755



UNIT 4758



ESTIMATED EXPENSES FOR UNITS 4755 & 4758

2 Bedroom / 2 Bathroom – Second Level – 1185 Square Feet

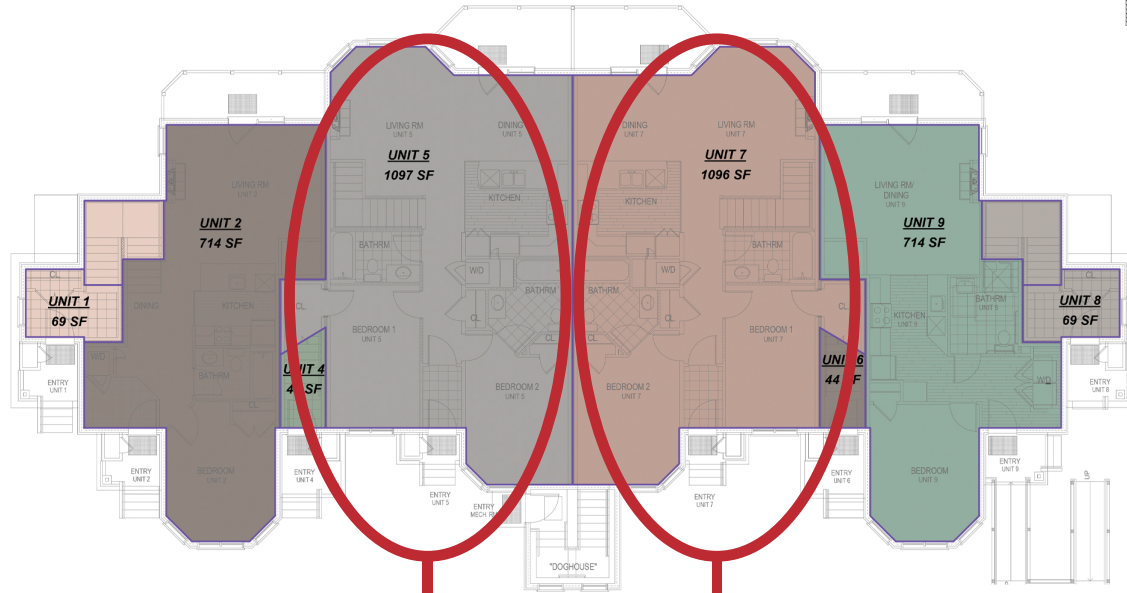
- Price: \$429,000
- Estimated Property Taxes: \$3,200–\$3,700 per year
- Estimated Association Fees: \$5,500 per year
- TV, Telephone, & Internet billed separately by Resort for \$88/month

4754

4756

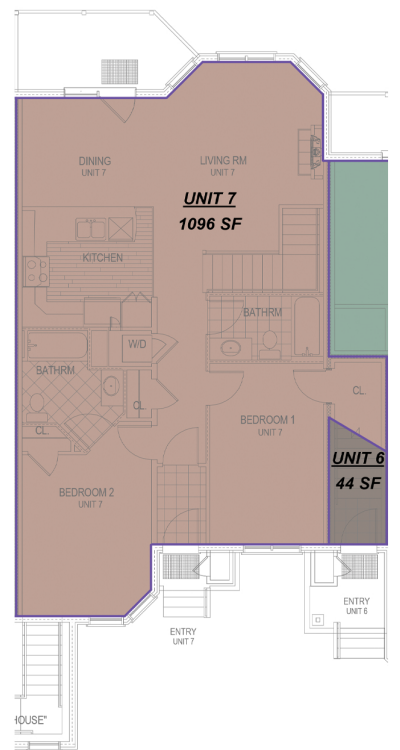
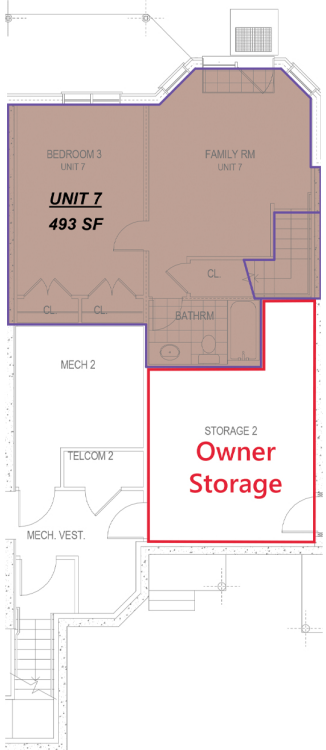
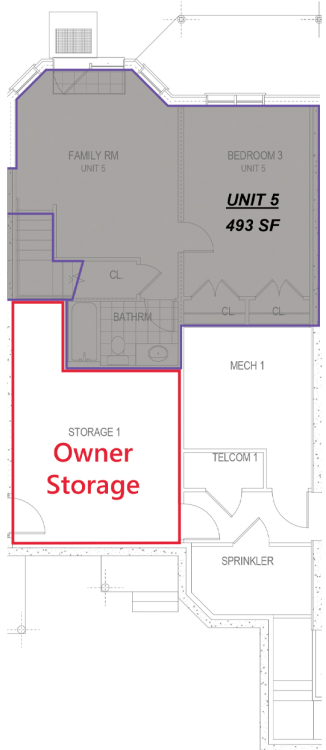
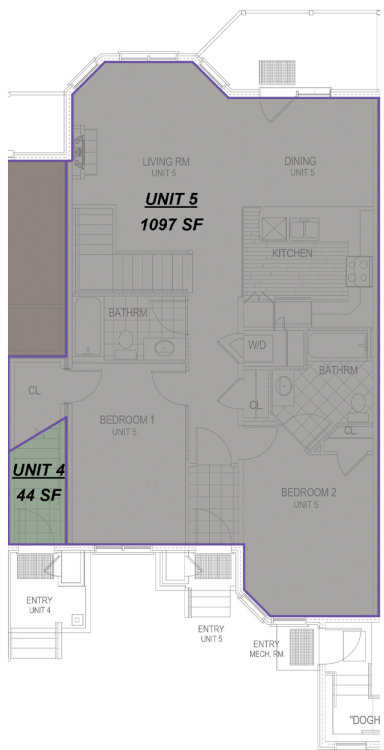
4757

4759



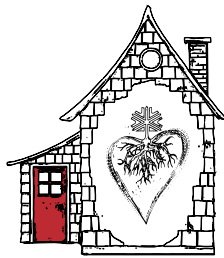
UNIT 4756

UNIT 4757



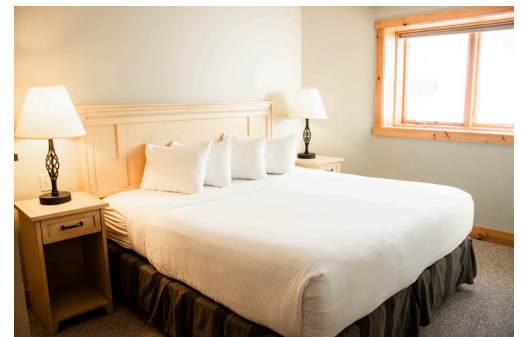
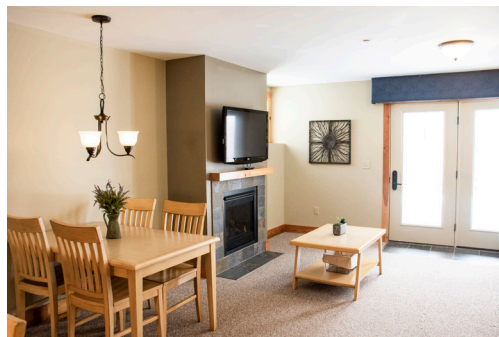
ESTIMATED EXPENSES FOR UNITS 4756 & 4757
 3 Bedroom / 3 Bathroom – First Level / Lower Level – 1,590 Square Feet

- Price: \$599,000
- Estimated Property Taxes: \$4,000-\$4,500 per year
- Estimated Association Fees: \$7,400 per year
- TV, Telephone, & Internet billed separately by Resort for \$88/month



THE
JOURNEY'S
END

JAY  PEAK



Hazen's Notch Condominium 4752 & 4761

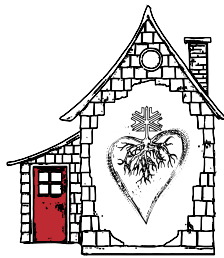
Jay Peak's Journey's End Condominiums provide the perfect home-base to recharge between one Jay Peak adventure ending and the next one beginning.

With the most snow in eastern North America to ride through, the 65,000 sf Pumphouse Indoor Waterpark, The Ice Haus Indoor Skating Arena, Clips and Reels Indoor Climbing, Arcade and Movie Theater, not to mention dozens of restaurants, coffee shops and eateries, 60km of Nordic skiing, 18 hole championship golf, and Taiga Spa, your choices of where to wear yourself out are not only endless, they're all right outside your front door.

The Journey's End Condominiums at Jay Peak; begin at The End to start writing your own Jay Peak adventure this season.

- Style: 1 Bed / 1 Bath
- Year Built: 2012
- Sq. Footage: 781
- Exterior: Pre-finished cement board clapboards, Cedar shingles on the gable ends and window bump-outs. Douglas fir decorative beams.
- Interior: Superior sound proofing between units (72 STC rating)
- Roof: Cambridge architectural shingles.
- Flooring: Carpet, tile and vinyl plank.
- Kitchen and Bathrooms: Granite countertops with Hickory cabinets.
- Windows: Marvin Integrity
- Fireplace: Propane fireplace with blower.
- Fully Furnished: appliances, furniture, bedding, towels, cookware and dinnerware.
- Storage: Unit comes with lockable owners closet in basement common area.
- Heating System: Propane fired boiler with radiant heat throughout.
- Septic: Municipal Sewer
- Water: Community
- Efficiency Vermont 5 Star+ Rated

FOR INFO & TO RESERVE: realestate@jaypeakresort.com | jaypeakresort.com/journeysend | (802) 327-2100



THE
JOURNEY'S
END

JAY  PEAK



OFFERED AT
\$339,000



Hazen's Notch Condominium 4753 & 4760

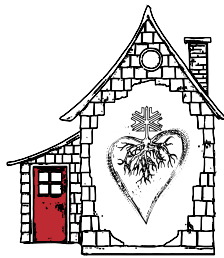
Jay Peak's Journey's End Condominiums provide the perfect home-base to recharge between one Jay Peak adventure ending and the next one beginning.

With the most snow in eastern North America to ride through, the 65,000 sf Pumphouse Indoor Waterpark, The Ice Haus Indoor Skating Arena, Clips and Reels Indoor Climbing, Arcade and Movie Theater, not to mention dozens of restaurants, coffee shops and eateries, 60km of Nordic skiing, 18 hole championship golf, and Taiga Spa, your choices of where to wear yourself out are not only endless, they're all right outside your front door.

The Journey's End Condominiums at Jay Peak; begin at The End to start writing your own Jay Peak adventure this season.

- Style: 1 Bed / 1 Bath
- Year Built: 2012
- Sq. Footage: 848
- Exterior: Pre-finished cement board clapboards, Cedar shingles on the gable ends and window bump-outs. Douglas fir decorative beams.
- Interior: Superior sound proofing between units (72 STC rating)
- Roof: Cambridge architectural shingles.
- Flooring: Carpet, tile and vinyl plank.
- Kitchen and Bathrooms: Granite countertops with Hickory cabinets.
- Windows: Marvin Integrity
- Fireplace: Propane fireplace with blower.
- Fully Furnished: appliances, furniture, bedding, towels, cookware and dinnerware.
- Storage: Unit comes with lockable owners closet in basement common area.
- Heating System: Propane fired boiler with radiant heat throughout.
- Septic: Municipal Sewer
- Water: Community
- Efficiency Vermont 5 Star+ Rated

FOR INFO & TO RESERVE: realestate@jaypeakresort.com | jaypeakresort.com/journeysend | (802) 327-2100



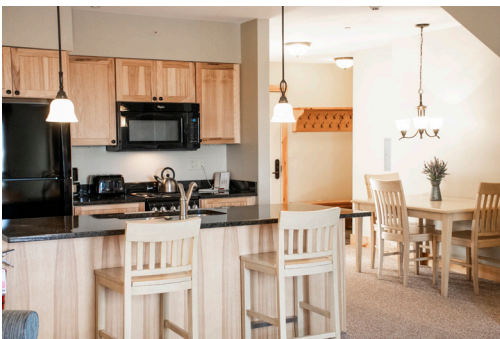
THE
JOURNEY'S
END

JAY  PEAK



4754 OFFERED AT
\$339,000

4759-ADA OFFERED AT
\$309,000



Hazen's Notch Condominium 4754 & 4759-ADA

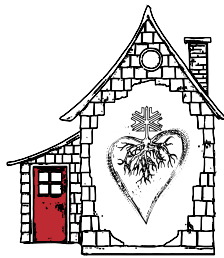
Jay Peak's Journey's End Condominiums provide the perfect home-base to recharge between one Jay Peak adventure ending and the next one beginning.

With the most snow in eastern North America to ride through, the 65,000 sf Pumphouse Indoor Waterpark, The Ice Haus Indoor Skating Arena, Clips and Reels Indoor Climbing, Arcade and Movie Theater, not to mention dozens of restaurants, coffee shops and eateries, 60km of Nordic skiing, 18 hole championship golf, and Taiga Spa, your choices of where to wear yourself out are not only endless, they're all right outside your front door.

The Journey's End Condominiums at Jay Peak; begin at The End to start writing your own Jay Peak adventure this season.

- Style: 1 Bed / 1 Bath
- Year Built: 2012
- Sq. Footage: 714
- Exterior: Pre-finished cement board clapboards, Cedar shingles on the gable ends and window bump-outs. Douglas fir decorative beams.
- Interior: Superior sound proofing between units (72 STC rating)
- Roof: Cambridge architectural shingles.
- Flooring: Carpet, tile and vinyl plank.
- Kitchen and Bathrooms: Granite countertops with Hickory cabinets.
- Windows: Marvin Integrity
- Fireplace: Propane fireplace with blower.
- Fully Furnished: appliances, furniture, bedding, towels, cookware and dinnerware.
- Storage: Unit comes with lockable owners closet in basement common area.
- Heating System: Propane fired boiler with radiant heat throughout.
- Septic: Municipal Sewer
- Water: Community
- Efficiency Vermont 5 Star+ Rated

FOR INFO & TO RESERVE: realestate@jaypeakresort.com | jaypeakresort.com/journeysend | (802) 327-2100



THE
JOURNEY'S
END

JAY  PEAK



Hazen's Notch Condominium 4755 & 4758

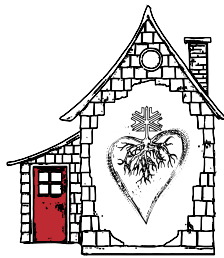
Jay Peak's Journey's End Condominiums provide the perfect home-base to recharge between one Jay Peak adventure ending and the next one beginning.

With the most snow in eastern North America to ride through, the 65,000 sf Pumphouse Indoor Waterpark, The Ice Haus Indoor Skating Arena, Clips and Reels Indoor Climbing, Arcade and Movie Theater, not to mention dozens of restaurants, coffee shops and eateries, 60km of Nordic skiing, 18 hole championship golf, and Taiga Spa, your choices of where to wear yourself out are not only endless, they're all right outside your front door.

The Journey's End Condominiums at Jay Peak; begin at The End to start writing your own Jay Peak adventure this season.

- Style: 2 Bed / 2 Bath
- Year Built: 2012
- Sq. Footage: 1,185
- Exterior: Pre-finished cement board clapboards, Cedar shingles on the gable ends and window bump-outs. Douglas fir decorative beams.
- Interior: Superior sound proofing between units (72 STC rating)
- Roof: Cambridge architectural shingles.
- Flooring: Carpet, tile and vinyl plank.
- Kitchen and Bathrooms: Granite countertops with Hickory cabinets.
- Windows: Marvin Integrity
- Fireplace: Propane fireplace with blower.
- Fully Furnished: appliances, furniture, bedding, towels, cookware and dinnerware.
- Storage: Unit comes with lockable owners closet in basement common area.
- Heating System: Propane fired boiler with radiant heat throughout.
- Septic: Municipal Sewer
- Water: Community
- Efficiency Vermont 5 Star+ Rated

FOR INFO & TO RESERVE: realestate@jaypeakresort.com | jaypeakresort.com/journeysend | (802) 327-2100



THE
JOURNEY'S
END

JAY  PEAK



OFFERED AT
\$599,000



Hazen's Notch Condominium 4756 & 4757

Jay Peak's Journey's End Condominiums provide the perfect home-base to recharge between one Jay Peak adventure ending and the next one beginning.

With the most snow in eastern North America to ride through, the 65,000 sf Pumphouse Indoor Waterpark, The Ice Haus Indoor Skating Arena, Clips and Reels Indoor Climbing, Arcade and Movie Theater, not to mention dozens of restaurants, coffee shops and eateries, 60km of Nordic skiing, 18 hole championship golf, and Taiga Spa, your choices of where to wear yourself out are not only endless, they're all right outside your front door.

The Journey's End Condominiums at Jay Peak; begin at The End to start writing your own Jay Peak adventure this season.

- Style: 3 Bed / 3 Bath
- Year Built: 2012
- Sq. Footage: 1,590
- Exterior: Pre-finished cement board clapboards, Cedar shingles on the gable ends and window bump-outs. Douglas fir decorative beams.
- Interior: Superior sound proofing between units (72 STC rating)
- Roof: Cambridge architectural shingles.
- Flooring: Carpet, tile and vinyl plank.
- Kitchen and Bathrooms: Granite countertops with Hickory cabinets.
- Windows: Marvin Integrity
- Fireplace: Propane fireplace with blower.
- Fully Furnished: appliances, furniture, bedding, towels, cookware and dinnerware.
- Storage: Unit comes with lockable owners closet in basement common area.
- Heating System: Propane fired boiler with radiant heat throughout.
- Septic: Municipal Sewer
- Water: Community
- Efficiency Vermont 5 Star+ Rated

FOR INFO & TO RESERVE: realestate@jaypeakresort.com | jaypeakresort.com/journeysend | (802) 327-2100