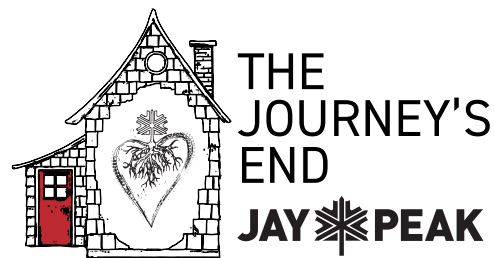


# THE START OF YOUR JAY PEAK ADVENTURE BEGINS AT JOURNEY'S END

Jay Peak is releasing a limited number of 1-, 2-, and 3-bedroom fully furnished condominiums for sale in the Journey's End property. The Catamount building consists of 10 units, located on the main access road, just steps from the Tramside Base.



## JOURNEY'S END CATAMOUNT BUILDING

**\$339,000 2ND FLOOR LEVEL #4770**  
1 BEDROOM/1 BATHROOM UNIT | 848 SQ.FT.

**\$339,000 1ST FLOOR LEVEL #4764**  
1 BEDROOM/1 BATHROOM UNIT | 714 SQ.FT.

**\$429,000 2ND FLOOR LEVEL #4765 & #4768**  
2 BEDROOM/2 BATHROOM UNIT | 1185 SQ.FT.

**\$599,000 1ST FLOOR LEVEL #4766 & #4767**  
3 BEDROOM/3 BATHROOM UNIT | 1590 SQ.FT.

### JAY PEAK HOMEOWNER BENEFITS INCLUDE

- » Ski-in/Ski-out access.
- » Discounts to many Jay Peak services & amenities. Visit [jaypeakresort.com/HowToPow](http://jaypeakresort.com/HowToPow) for details.
- » An opportunity to participate in the Jay Peak Rental Program with Season Pass incentives.

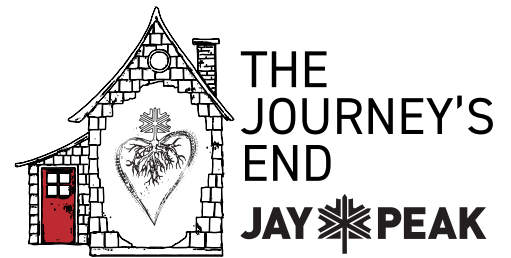


**FOR INFO & TO RESERVE:** [smacleod@jaypeakresort.com](mailto:smacleod@jaypeakresort.com) | [jaypeakresort.com/journeysend](http://jaypeakresort.com/journeysend) | (802) 858-5359

# JAY PEAK RESORT

## JOURNEY'S END

Jay Peak's Journey's End Condominiums provide the perfect home-base to recharge between one Jay Peak adventure ending and the next one beginning.





# SKI-IN/SKI-OUT TRAILS

## JOURNEY'S END



With the most snow in eastern North America to ride through, the 65,000 sq. ft. Pumphouse Indoor Waterpark, The Ice Haus Indoor Skating Arena, Clips and Reels Indoor Climbing, Arcade and Movie Theater, not to mention dozens of restaurants, coffee shops and eateries, 60km of Nordic skiing, 18 hole championship golf, and Taiga Spa, your choices of where to wear yourself out are not only endless, they're all right outside your front door.

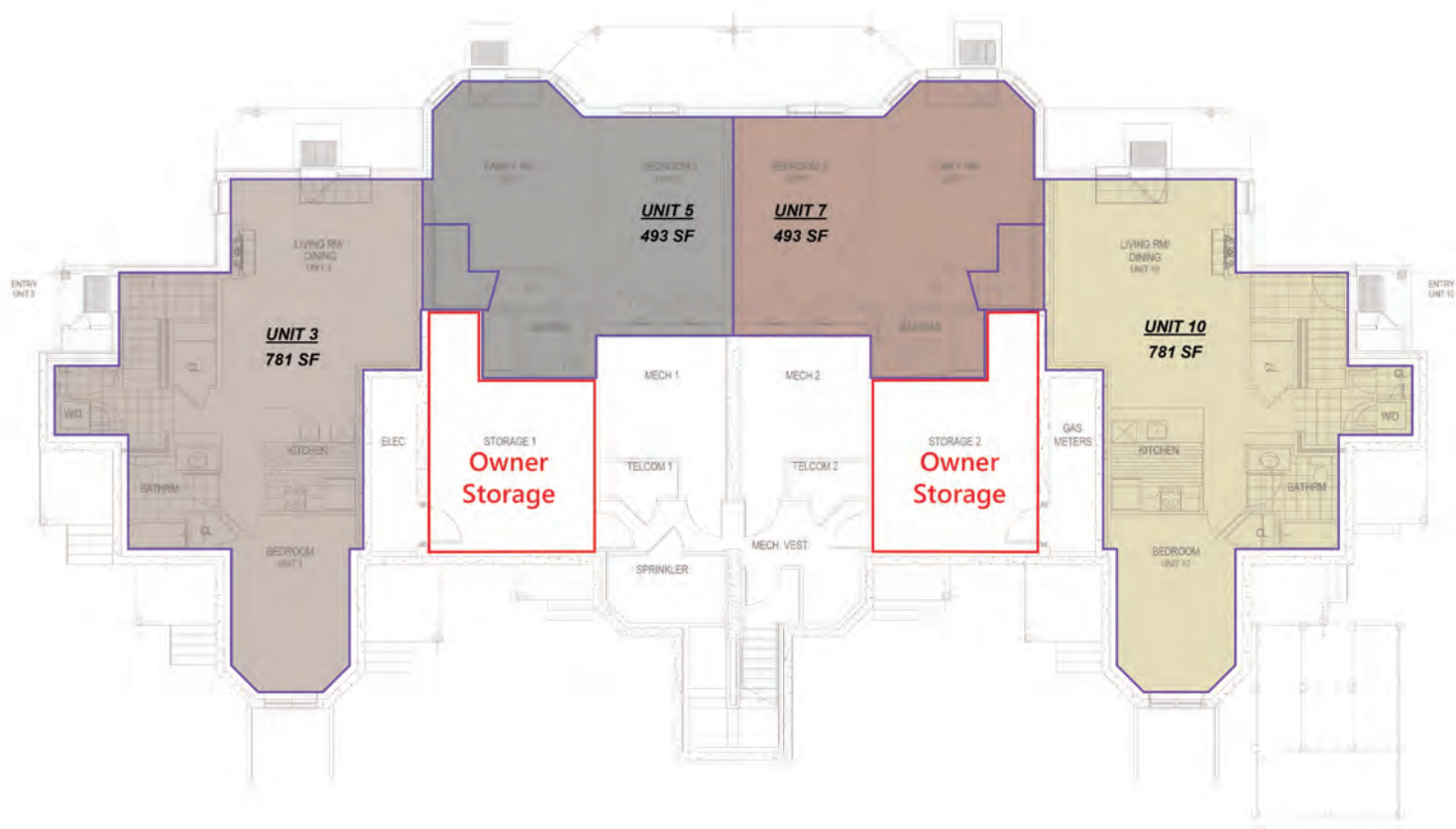
The Journey's End Condominiums at Jay Peak; begin at The End to start writing your own Jay Peak adventure this season.





# CATAMOUNT CONDOMINIUMS (C-2)

## JOURNEY'S END: LOWER LEVEL



# CATAMOUNT CONDOMINIUMS (C-2)

## JOURNEY'S END: FIRST FLOOR

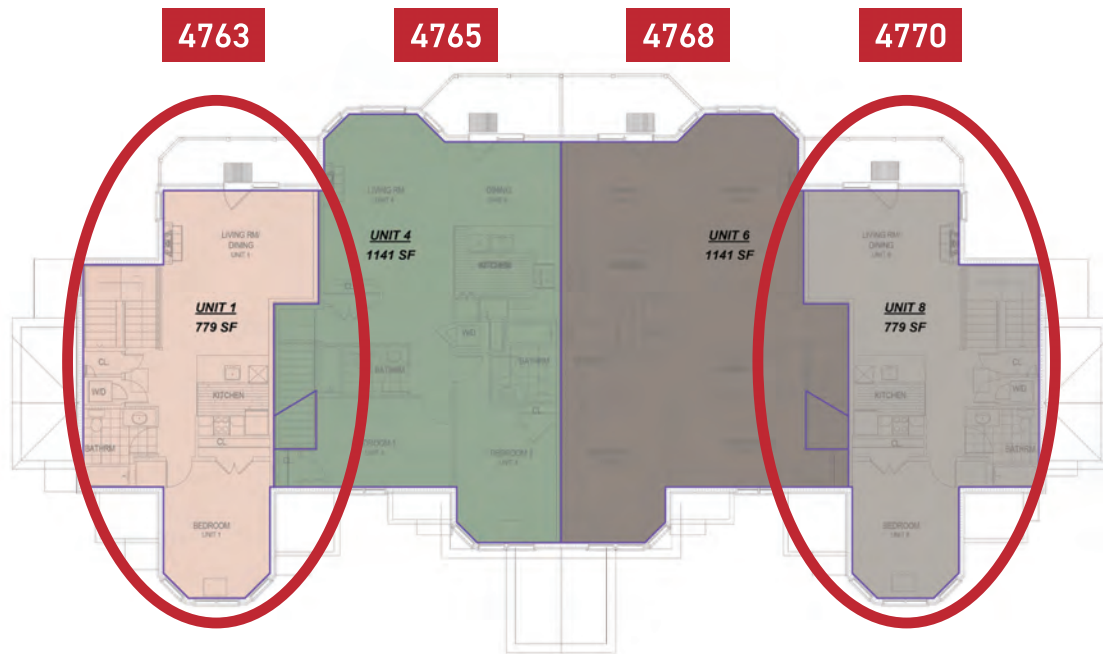




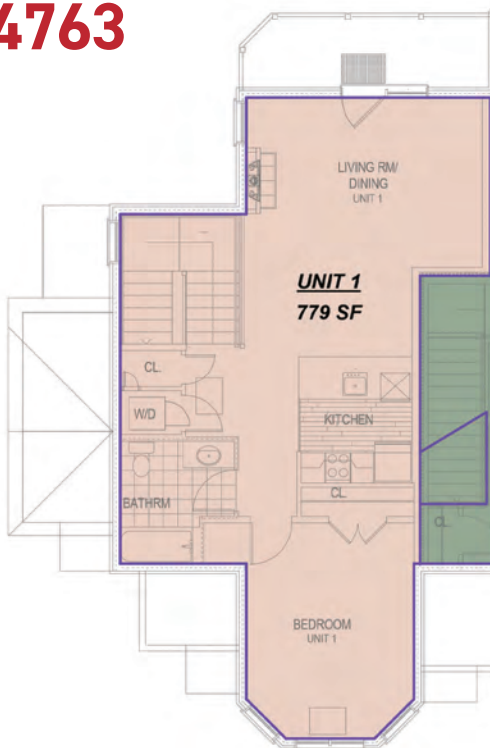
# CATAMOUNT CONDOMINIUMS (C-2)

## JOURNEY'S END: SECOND FLOOR

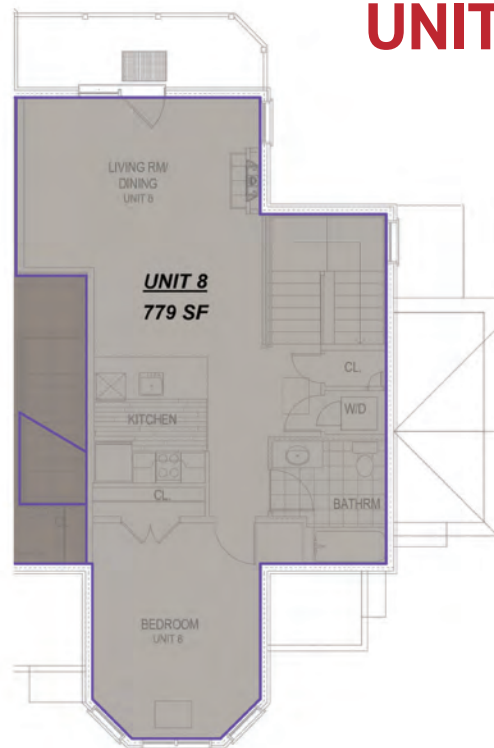




## UNIT 4763



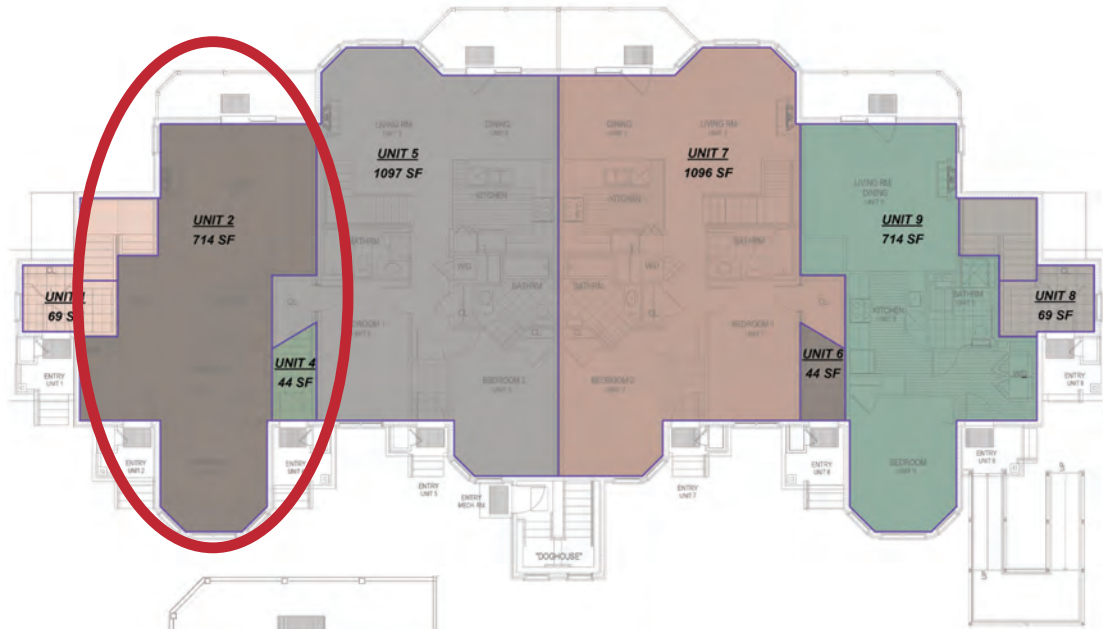
## UNIT 4770



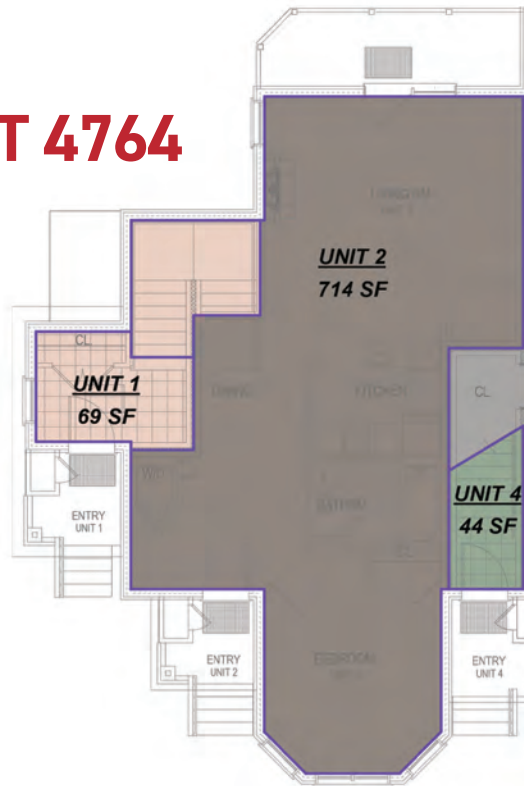
### ESTIMATED EXPENSES FOR UNITS 4770

1 Bedroom / 1 Bathroom – 2nd Floor – 848 Square Feet

- Price: \$339,000
- Estimated Property Taxes: \$3,200–\$3,700 per year
- Estimated Association Fees: \$350 per month
- TV, Telephone, & Internet billed separately by Resort for \$88/month

**4764****4766****4767****4769 ADA**

## UNIT 4764



### ESTIMATED EXPENSES FOR UNITS 4764

1 Bedroom / 1 Bathroom – First Level – 714 Square Feet

- 4754 Price: \$339,000
- Estimated Property Taxes: \$3,200–\$3,700 per year
- Estimated Association Fees: \$300 per month
- TV, Telephone, & Internet billed separately by Resort for \$88/month



4764

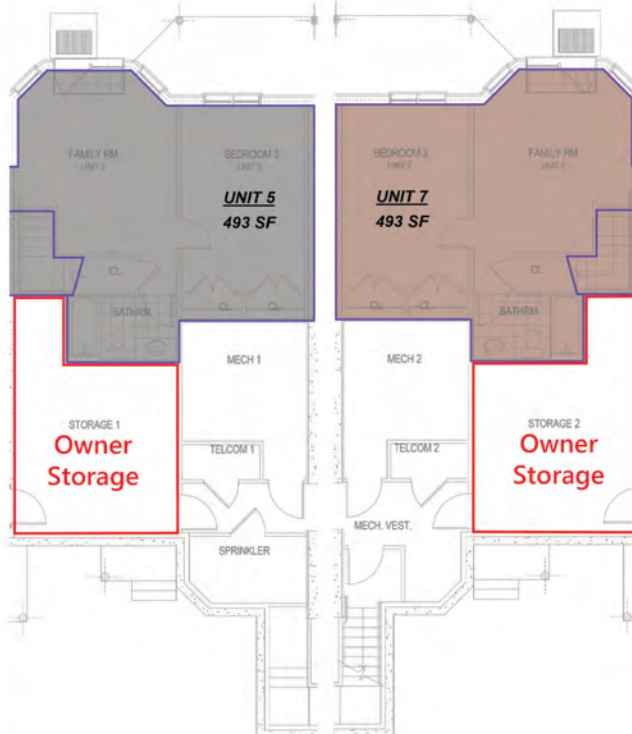
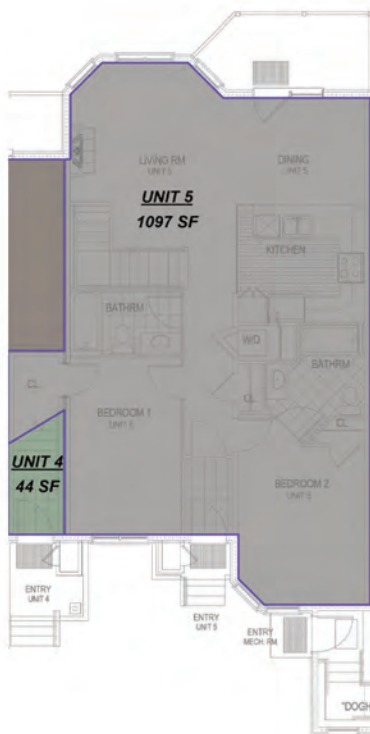
4766

4767

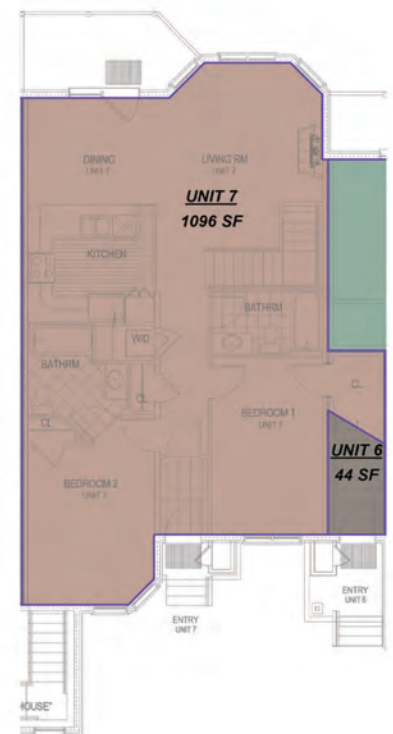
4769



## UNIT 4766



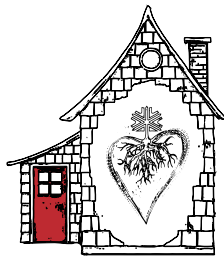
## UNIT 4767



### ESTIMATED EXPENSES FOR UNITS 4766 & 4767

3 Bedroom / 3 Bathroom – First Level / Lower Level – 1,590 Square Feet

- Price: \$599,000
- Estimated Property Taxes: \$4,000–\$4,500 per year
- Estimated Association Fees: \$665 per month
- TV, Telephone, & Internet billed separately by Resort for \$88/month



THE  
JOURNEY'S  
END

JAY  PEAK



OFFERED AT  
**\$339,000**



## Catamount Condominium 4763 & 4770

Jay Peak's Journey's End Condominiums provide the perfect home-base to recharge between one Jay Peak adventure ending and the next one beginning.

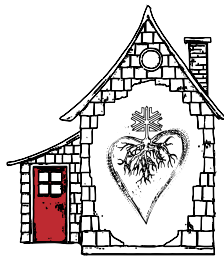
With the most snow in eastern North America to ride through, the 65,000 sf Pumpphouse Indoor Waterpark, The Ice Haus Indoor Skating Arena, Clips and Reels Indoor Climbing, Arcade and Movie Theater, not to mention dozens of restaurants, coffee shops and eateries, 60km of Nordic skiing, 18 hole championship golf, and Taiga Spa, your choices of where to wear yourself out are not only endless, they're all right outside your front door.

The Journey's End Condominiums at Jay Peak; begin at The End to start writing your own Jay Peak adventure this season.

- Style: 1 Bed / 1 Bath
- Year Built: 2012
- Sq. Footage: 848
- Exterior: Pre-finished cement board clapboards, Cedar shingles on the gable ends and window bump-outs. Douglas fir decorative beams.
- Interior: Superior sound proofing between units (72 STC rating)
- Roof: Cambridge architectural shingles.
- Flooring: Carpet, tile and vinyl plank.
- Kitchen and Bathrooms: Granite countertops with Hickory cabinets.
- Windows: Marvin Integrity
- Fireplace: Propane fireplace with blower.
- Fully Furnished: appliances, furniture, bedding, towels, cookware and dinnerware.
- Storage: Unit comes with lockable owners closet in basement common area.
- Heating System: Propane fired boiler with radiant heat throughout.
- Septic: Municipal Sewer
- Water: Community
- Efficiency Vermont 5 Star+ Rated

**FOR INFO & TO RESERVE:** [smacleod@jaypeakresort.com](mailto:smacleod@jaypeakresort.com) | [jaypeakresort.com/journeysend](http://jaypeakresort.com/journeysend) | (802) 858-5359





THE  
JOURNEY'S  
END

JAY  PEAK



## Catamount Condominium 4769 ADA

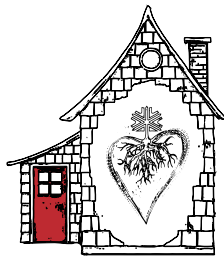
Jay Peak's Journey's End Condominiums provide the perfect home-base to recharge between one Jay Peak adventure ending and the next one beginning.

With the most snow in eastern North America to ride through, the 65,000 sf Pumphouse Indoor Waterpark, The Ice Haus Indoor Skating Arena, Clips and Reels Indoor Climbing, Arcade and Movie Theater, not to mention dozens of restaurants, coffee shops and eateries, 60km of Nordic skiing, 18 hole championship golf, and Taiga Spa, your choices of where to wear yourself out are not only endless, they're all right outside your front door.

The Journey's End Condominiums at Jay Peak; begin at The End to start writing your own Jay Peak adventure this season.

- Style: 1 Bed / 1 Bath
- Year Built: 2012
- Sq. Footage: 714
- Exterior: Pre-finished cement board clapboards, Cedar shingles on the gable ends and window bump-outs. Douglas fir decorative beams.
- Interior: Superior sound proofing between units (72 STC rating)
- Roof: Cambridge architectural shingles.
- Flooring: Carpet, tile and vinyl plank.
- Kitchen and Bathrooms: Granite countertops with Hickory cabinets.
- Windows: Marvin Integrity
- Fireplace: Propane fireplace with blower.
- Fully Furnished: appliances, furniture, bedding, towels, cookware and dinnerware.
- Storage: Unit comes with lockable owners closet in basement common area.
- Heating System: Propane fired boiler with radiant heat throughout.
- Septic: Municipal Sewer
- Water: Community
- Efficiency Vermont 5 Star+ Rated

**FOR INFO & TO RESERVE:** [smacleod@jaypeakresort.com](mailto:smacleod@jaypeakresort.com) | [jaypeakresort.com/journeysend](http://jaypeakresort.com/journeysend) | (802) 858-5359

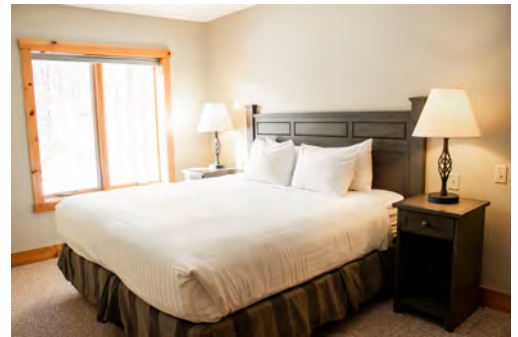


THE  
JOURNEY'S  
END

JAY  PEAK



OFFERED AT  
**\$599,000**



## Catamount Condominium 4766 & 4767

Jay Peak's Journey's End Condominiums provide the perfect home-base to recharge between one Jay Peak adventure ending and the next one beginning.

With the most snow in eastern North America to ride through, the 65,000 sf Pumphouse Indoor Waterpark, The Ice Haus Indoor Skating Arena, Clips and Reels Indoor Climbing, Arcade and Movie Theater, not to mention dozens of restaurants, coffee shops and eateries, 60km of Nordic skiing, 18 hole championship golf, and Taiga Spa, your choices of where to wear yourself out are not only endless, they're all right outside your front door.

The Journey's End Condominiums at Jay Peak; begin at The End to start writing your own Jay Peak adventure this season.

- Style: 3 Bed / 3 Bath
- Year Built: 2012
- Sq. Footage: 1,590
- Exterior: Pre-finished cement board clapboards, Cedar shingles on the gable ends and window bump-outs. Douglas fir decorative beams.
- Interior: Superior sound proofing between units (72 STC rating)
- Roof: Cambridge architectural shingles.
- Flooring: Carpet, tile and vinyl plank.
- Kitchen and Bathrooms: Granite countertops with Hickory cabinets.
- Windows: Marvin Integrity
- Fireplace: Propane fireplace with blower.
- Fully Furnished: appliances, furniture, bedding, towels, cookware and dinnerware.
- Storage: Unit comes with lockable owners closet in basement common area.
- Heating System: Propane fired boiler with radiant heat throughout.
- Septic: Municipal Sewer
- Water: Community
- Efficiency Vermont 5 Star+ Rated

**FOR INFO & TO RESERVE:** [smacleod@jaypeakresort.com](mailto:smacleod@jaypeakresort.com) | [jaypeakresort.com/journeysend](http://jaypeakresort.com/journeysend) | (802) 858-5359