

THE START OF YOUR JAY PEAK ADVENTURE BEGINS AT JOURNEY'S END

Jay Peak is releasing a limited number of 1-, 2-, and 3-bedroom fully furnished condominiums for sale in the Journey's End property. The Hazen's Notch building consists of 10 units, located on the main access road, just steps from the Tramside Base.



JOURNEY'S END HAZEN'S NOTCH BUILDING

\$299,000 FIRST FLOOR LEVEL #4759 ADA
1 BEDROOM/1 BATHROOM UNIT | 714 SQ.FT.

JAY PEAK HOMEOWNER BENEFITS INCLUDE

- » Ski-in/Ski-out access.
- » Discounts to many Jay Peak services & amenities. Visit jaypeakresort.com/HowToPow for details.
- » An opportunity to participate in the Jay Peak Rental Program with Season Pass incentives.



FOR INFO & TO RESERVE: smacleod@jaypeakresort.com
jaypeakresort.com/resort/real-estate | (802) 858-5359



Four
Seasons

Sotheby's
INTERNATIONAL REALTY

JAY PEAK RESORT JOURNEY'S END

Jay Peak's Powderline Condominiums provide the perfect home-base to recharge between one Jay Peak adventure ending and the next one beginning.



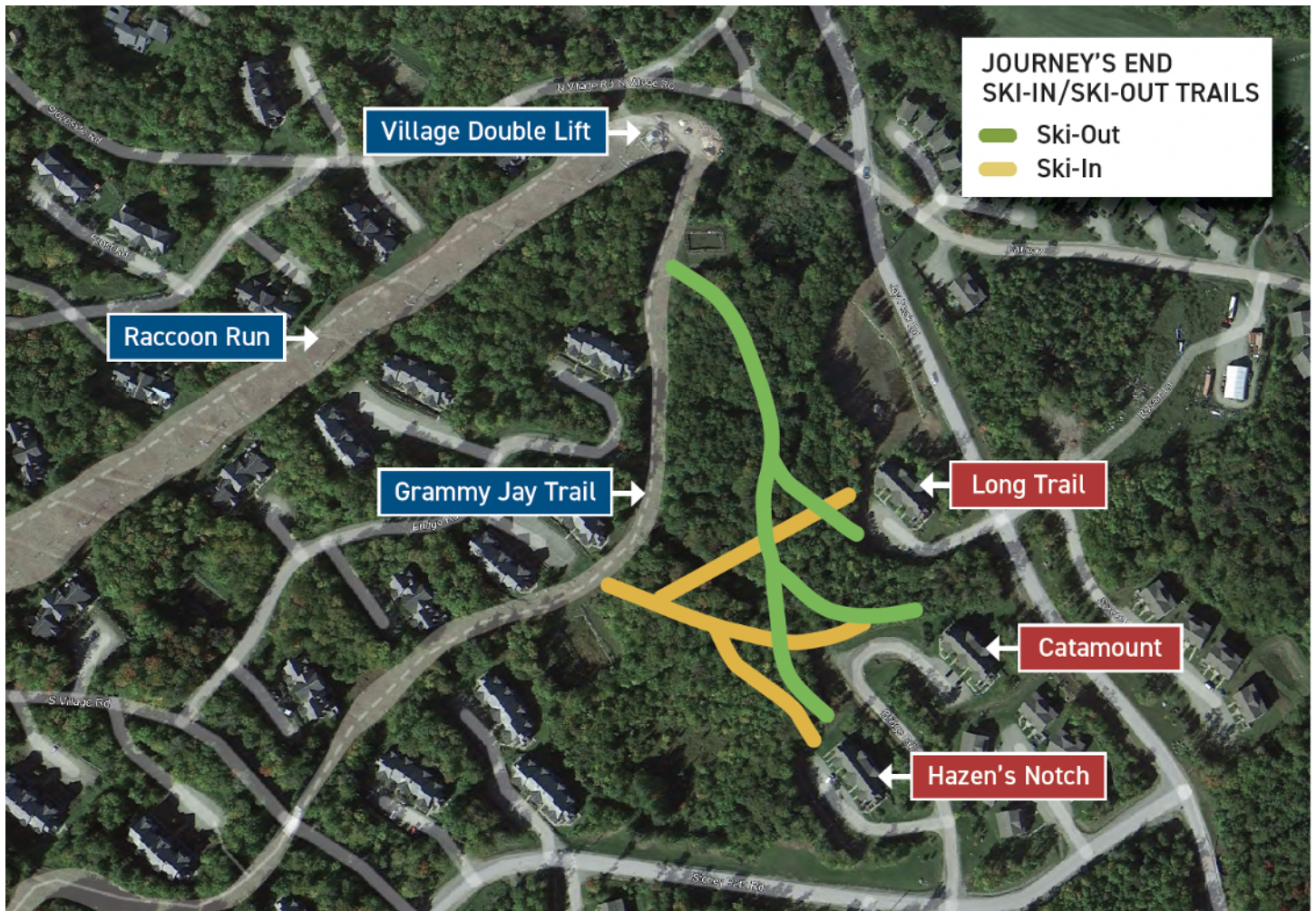
SKI-IN/SKI-OUT TRAILS

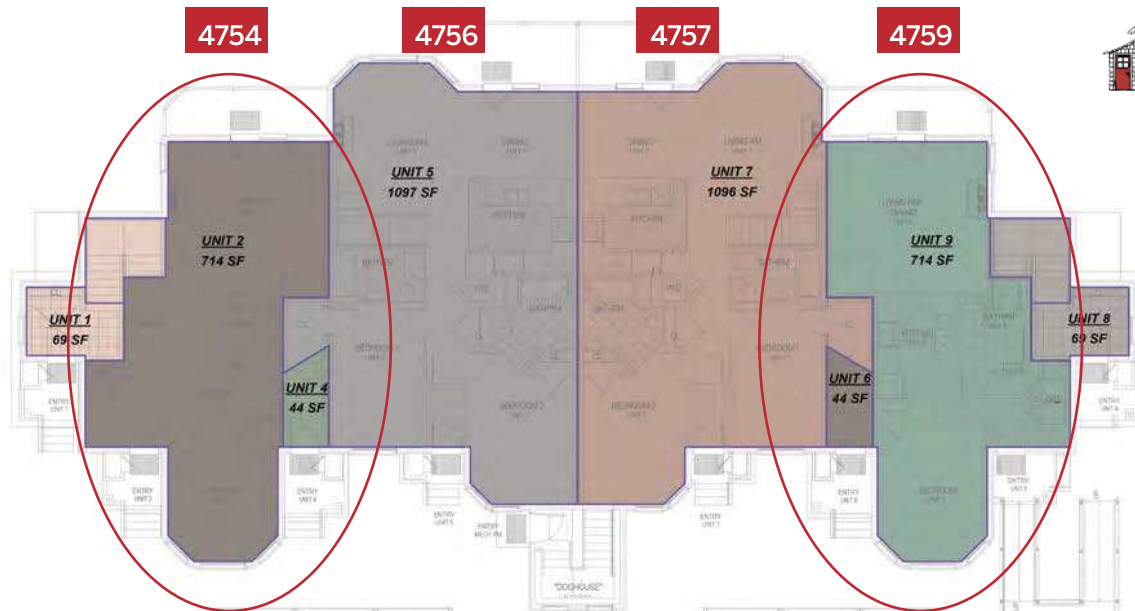
JOURNEY'S END



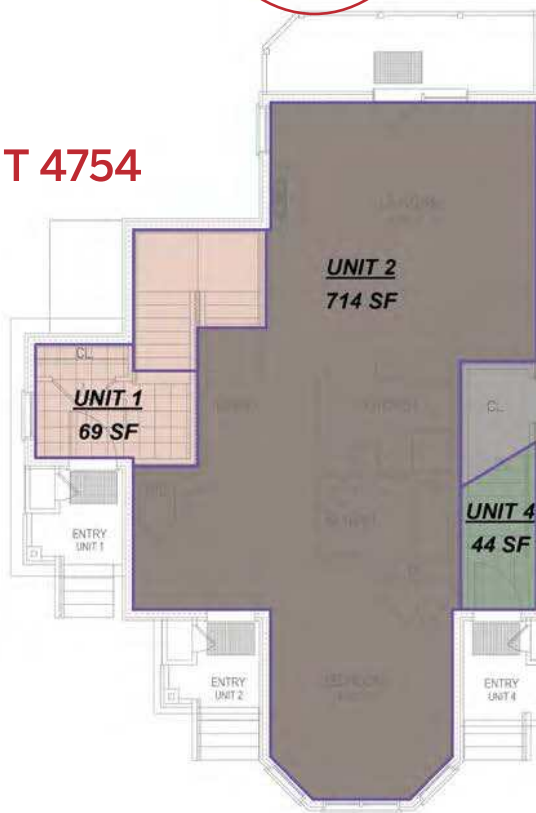
With the most snow in eastern North America to ride through, the 65,000 sq. ft. Pumphouse Indoor Waterpark, The Ice Haus Indoor Skating Arena, Clips and Reels Indoor Climbing, Arcade and Movie Theater, not to mention dozens of restaurants, coffee shops and eateries, 60km of Nordic skiing, 18 hole championship golf, and Taiga Spa, your choices of where to wear yourself out are not only endless, they're all right outside your front door.

The Journey's End Condominiums at Jay Peak; begin at The End to start writing your own Jay Peak adventure this season.

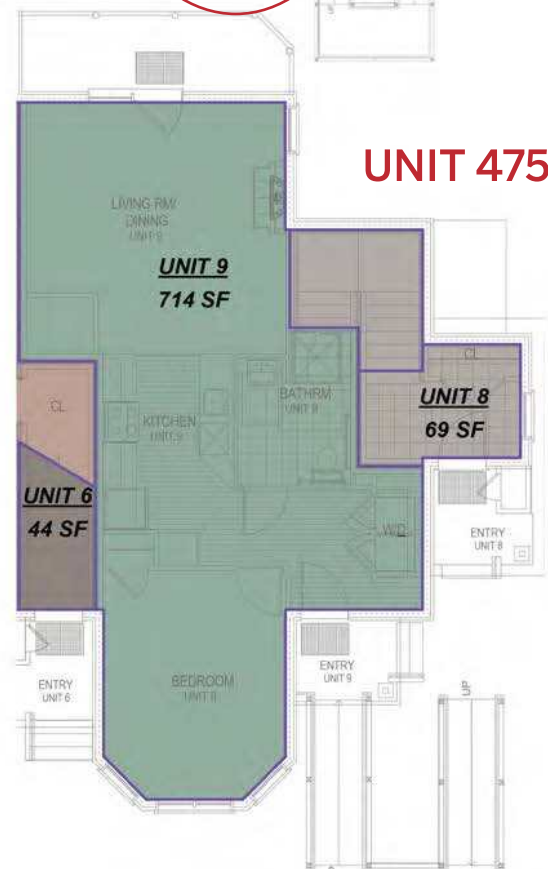




UNIT 4754



UNIT 4759 ADA



ESTIMATED EXPENSES FOR UNIT 4759

1 Bedroom / 1 Bathroom ADA- First Level – 714 Square Feet

- Price: \$299,000
- Estimated Property Taxes: \$3,200–\$3,700 per year
- Estimated Association Fees: \$300 per month
- TV, Telephone, & Internet billed separately by Resort for \$97/month



**OFFERED AT
\$299,000**



Hazen's Notch Condominium 4759-ADA

Jay Peak's Journey's End Condominiums provide the perfect home-base to recharge between one Jay Peak adventure ending and the next one beginning.

With the most snow in eastern North America to ride through, the 65,000 sf Pumphouse Indoor Waterpark, The Ice Haus Indoor Skating Arena, Clips and Reels Indoor Climbing, Arcade and Movie Theater, not to mention dozens of restaurants, coffee shops and eateries, 60km of Nordic skiing, 18 hole championship golf, and Taiga Spa, your choices of where to wear yourself out are not only endless, they're all right outside your front door.

The Journey's End Condominiums at Jay Peak; begin at The End to start writing your own Jay Peak adventure this season.

- Style: 1 Bed / 1 Bath
- Year Built: 2012
- Sq. Footage: 714
- Exterior: Pre-finished cement board clapboards, Cedar shingles on the gable ends and window bump-outs. Douglas fir decorative beams.
- Interior: Superior sound proofing between units (72 STC rating)
- Roof: Cambridge architectural shingles.
- Flooring: Carpet, tile and vinyl plank.
- Kitchen and Bathrooms: Granite countertops with Hickory cabinets.
- Windows: Marvin Integrity
- Fireplace: Propane fireplace with blower.
- Fully Furnished: appliances, furniture, bedding, towels, cookware and dinnerware.
- Storage: Unit comes with lockable owners closet in basement common area.
- Heating System: Propane fired boiler with radiant heat throughout.
- Septic: Municipal Sewer
- Water: Community
- Efficiency Vermont 5 Star+ Rated

FOR INFO & TO RESERVE: smacleod@jaypeakresort.com
jaypeakresort.com/resort/real-estate | (802) 858-5359



**Four
Seasons**

Sotheby's
INTERNATIONAL REALTY