

THE START OF YOUR JAY PEAK ADVENTURE BEGINS AT POWDER LINE

Jay Peak is proud to offer three 2-bedroom condominiums at Powderline, each with 3 levels of living. These units are fully furnished and conveniently located for access to Jay's year round amenities.



JAY PEAK HOMEOWNER BENEFITS INCLUDE

Discounts to many Jay Peak services
& amenities.

Visit jaypeakresort.com/HowToPow
for details.



POWDERLINE CONDOMINIUMS

\$440,000 3 LEVEL UNIT #4726

2 BEDROOM / 2 BATHROOM UNIT | 1,287 SQ.FT.

\$440,000 3 LEVEL UNIT #4727

2 BEDROOM / 2 BATHROOM UNIT | 1,287 SQ.FT.

\$440,000 3 LEVEL UNIT #4728

2 BEDROOM / 2 BATHROOM UNIT | 1,287 SQ.FT.

\$495,000 2 LEVEL UNIT #4782

2 BEDROOM / 2 BATHROOM UNIT | 1,290 SQ.FT.

\$490,000 2 LEVEL UNIT #4783

2 BEDROOM / 2 BATHROOM UNIT | 1,290 SQ.FT.

\$490,000 2 LEVEL UNIT #4784

2 BEDROOM / 2 BATHROOM UNIT | 1,290 SQ.FT.

\$495,000 2 LEVEL UNIT #4785

2 BEDROOM / 2 BATHROOM UNIT | 1,290 SQ.FT.



Four
Seasons

Sotheby's
INTERNATIONAL REALTY

JAY  PEAK

FOR INFO & TO RESERVE: smacleod@jaypeakresort.com | jaypeakresort.com/realestate | (802) 858-5359

JAY PEAK RESORT POWDERLINE



Jay Peak's Powderline Condominiums provide the perfect home-base to recharge between one Jay Peak adventure ending and the next one beginning.



Four
Seasons

Sotheby's
INTERNATIONAL REALTY





Four
Seasons

Sotheby's
INTERNATIONAL REALTY



Powder Line Condominiums #4726, 4727

There's something magical about Jay Peak—where the snow falls deeper, the air feels crisper, and time slows down just enough to remind you of why you came. Tucked along White Pine Drive, this fully furnished condo isn't just a place to stay—it's your personal retreat in the heart of Vermont's most iconic mountain escape.

Imagine waking up to the hush of fresh powder outside your window, pulling on your gear and being first in line at the lift. After a day carving lines through the East's deepest snow, come home to a firelit evening or a cozy après-ski on the couch. Or keep the good times rolling at one of Jay Peak's several restaurants before heading back and doing it all over again the next day.

This isn't just a retreat—it's part of a legacy. From the retro charm of the Ice Haus skating rink to the splash and laughter echoing through the PumpHouse Waterpark, to the 18-hole golf course, and trails to explore, Jay Peak is a year-round playground. And when you're not here, let your condo work for you through Jay Peak's seamless in-house rental program.

Welcome to the way winter (and every season) used to feel. Welcome to Jay Peak.

- 19 White Pine Drive
- Deeded Rental Restriction
- Style: 2 Bed / 2 Bath
- Year Built: 2013
- Sq. Footage: 1287
- Exterior: wood siding
- Interior: gas fireplace, first floor laundry, fully furnished
- Roof: Cambridge architectural shingles.
- Flooring: Carpet, tile and vinyl plank.
- Kitchen and Bathrooms: Granite countertops with Hickory cabinets.
- Windows: Marvin Integrity
- Fireplace: Propane fireplace with blower.
- Fully Furnished: appliances, furniture, bedding, towels, cookware and dinnerware.
- Storage: Unit comes with lockable covered storage
- Heating System: Propane fired boiler with baseboards
- Septic: Municipal Sewer
- Water: Community

FLOOR PLAN, 19 WHITE PINE POWDERLINE



UNIT #4726



FLOOR PLAN CREATED BY CUBICASA APP. MEASUREMENTS DEEMED HIGHLY RELIABLE BUT NOT GUARANTEED.

UNIT #4727



FLOOR PLAN CREATED BY CUBICASA APP. MEASUREMENTS DEEMED HIGHLY RELIABLE BUT NOT GUARANTEED.

Scan the code to
view the 3D Tour





Four
Seasons

Sotheby's
INTERNATIONAL REALTY



Powder Line Condominiums #4782, 4783

There's something magical about Jay Peak—where the snow falls deeper, the air feels crisper, and time slows down just enough to remind you of why you came. Tucked along White Pine Drive, this fully furnished condo isn't just a place to stay—it's your personal retreat in the heart of Vermont's most iconic mountain escape.

Imagine waking up to the hush of fresh powder outside your window, pulling on your gear and being first in line at the lift. After a day carving lines through the East's deepest snow, come home to a firelit evening or a cozy après-ski on the couch. Or keep the good times rolling at one of Jay Peak's several restaurants before heading back and doing it all over again the next day.

This isn't just a retreat—it's part of a legacy. From the retro charm of the Ice Haus skating rink to the splash and laughter echoing through the PumpHouse Waterpark, to the 18-hole golf course, and trails to explore, Jay Peak is a year-round playground. And when you're not here, let your condo work for you through Jay Peak's seamless in-house rental program.

Welcome to the way winter (and every season) used to feel. Welcome to Jay Peak.

- 196 Stateside Road
- Style: 2 Bed / 2 Bath
- Year Built: 2013
- Sq. Footage: 1290
- Exterior: wood siding
- Interior: gas fireplace, first floor laundry, fully furnished
- Roof: Cambridge architectural shingles.
- Flooring: Carpet, tile and vinyl plank.
- Kitchen and Bathrooms: Granite countertops with Hickory cabinets, new kitchen appliances
- Windows: Marvin Integrity
- Fireplace: Propane fireplace with blower.
- Fully Furnished: appliances, furniture, bedding, towels, cookware and dinnerware.
- Storage: Unit comes with lockable covered storage
- Heating System: Propane fired boiler with baseboards
- Septic: Community Sewer
- Water: Community

FOR INFO & TO RESERVE: smacleod@jaypeakresort.com | jaypeakresort.com/realestate | (802) 858-5359

FLOOR PLAN, 196 STATESIDE RD POWDERLINE

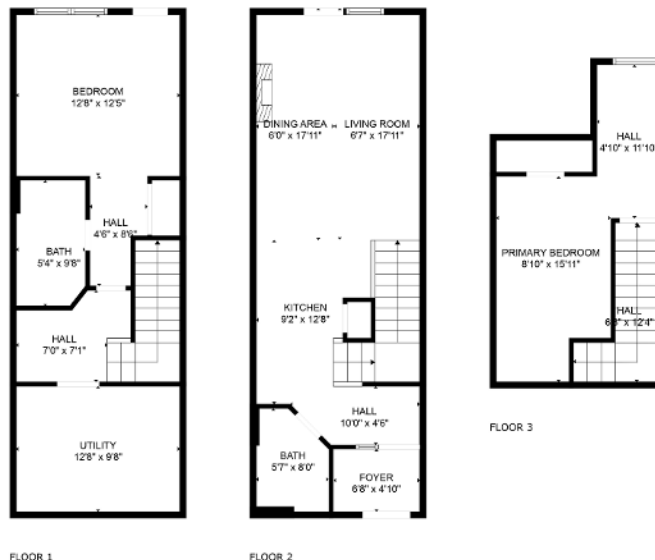


UNIT #4782



FLOOR PLAN CREATED BY CUBICASA APP. MEASUREMENTS DEEMED HIGHLY RELIABLE BUT NOT GUARANTEED.

UNIT #4783



ESTIMATED AREAS
GLA BELOW GROUND: 0 sq. ft. EXCLUDED AREAS: 518 sq. ft.
GLA FLOOR 2: 517 sq. ft. EXCLUDED AREAS: 0 sq. ft.
GLA FLOOR 3: 253 sq. ft. EXCLUDED AREAS: 38 sq. ft.
Total GLA: 770 sq. ft. total area: 1326 sq. ft.

FLOOR PLAN CREATED BY CUBICASA APP. MEASUREMENTS DEEMED HIGHLY RELIABLE BUT NOT GUARANTEED.

Scan the code to
view the 3D Tour

