

# THE START OF YOUR JAY PEAK ADVENTURE BEGINS AT POWDER LINE

Jay Peak is proud to offer three 2-bedroom condominiums at Powderline, each with 3 levels of living. These units are fully furnished and conveniently located for access to Jay's year round amenities.



## JAY PEAK HOMEOWNER BENEFITS INCLUDE

Discounts to many Jay Peak services  
& amenities.

Visit [jaypeakresort.com/HowToPow](http://jaypeakresort.com/HowToPow)  
for details.



## POWDERLINE CONDOMINIUMS

**\$440,000 3 LEVEL UNIT #4727**

2 BEDROOM / 2 BATHROOM UNIT | 1,287 SQ.FT.

**\$440,000 3 LEVEL UNIT #4728**

2 BEDROOM / 2 BATHROOM UNIT | 1,287 SQ.FT.

### Call a Buyer Representative



**Joan McAllister**  
802.274.0691



**Cheryl Kerr**  
802.535.9676

**\$495,000 2 LEVEL END UNIT #4782**

2 BEDROOM / 2 BATHROOM UNIT | 1,290 SQ.FT.

**\$490,000 2 LEVEL UNIT #4783**

2 BEDROOM / 2 BATHROOM UNIT | 1,290 SQ.FT.

**\$490,000 2 LEVEL UNIT #4784**

2 BEDROOM / 2 BATHROOM UNIT | 1,290 SQ.FT.

**\$495,000 2 LEVEL END UNIT #4785**

2 BEDROOM / 2 BATHROOM UNIT | 1,290 SQ.FT.



Four  
Seasons

**Sotheby's**  
INTERNATIONAL REALTY

**JAY PEAK**

FOR INFO & TO RESERVE: [smacleod@jaypeakresort.com](mailto:smacleod@jaypeakresort.com) | [jaypeakresort.com/realestate](http://jaypeakresort.com/realestate) | (802) 858-5359

# JAY PEAK RESORT POWDERLINE



Jay Peak's Powderline Condominiums provide the perfect home-base to recharge between one Jay Peak adventure ending and the next one beginning.



Four  
Seasons

Sotheby's  
INTERNATIONAL REALTY







Four  
Seasons

Sotheby's  
INTERNATIONAL REALTY



## Powder Line Condominiums #4727 and #4728

### Estimated Property Taxes

\$7,201.37

### HOA Fees

\$442.83 / month

Includes Heat, Hot Water, Landscaping, Plowing, Sewer,  
Trash, Water, Condo Association Fee

\$97 / month

Includes Cable and Internet

- 19 White Pine Drive
- Style: 2 Bed / 2 Bath
- Year Built: 2013
- Sq. Footage: 1287
- Exterior: wood siding
- Interior: gas fireplace, first floor laundry, fully furnished
- Roof: Cambridge architectural shingles.
- Flooring: Carpet, tile and vinyl plank.
- Kitchen and Bathrooms: Granite countertops with Hickory cabinets.
- Windows: Marvin Integrity
- Fireplace: Propane fireplace with blower.
- Fully Furnished: appliances, furniture, bedding, towels, cookware and dinnerware.
- Storage: Unit comes with lockable covered storage
- Heating System: Propane fired boiler with baseboards
- Septic: Municipal Sewer
- Water: Community

FOR INFO & TO RESERVE: [smacleod@jaypeakresort.com](mailto:smacleod@jaypeakresort.com) | [jaypeakresort.com/realestate](http://jaypeakresort.com/realestate) | (802) 858-5359

# FLOOR PLAN, 19 WHITE PINE POWDERLINE



## UNIT #4727

(#4728 IS SIMILAR  
BUT DOOR IS ON  
THE SIDE, END  
UNIT)



FLOOR PLAN CREATED BY CUBICASA APP. MEASUREMENTS DEEMED HIGHLY RELIABLE BUT NOT GUARANTEED.

Scan the code to  
view the 3D Tour







Four  
Seasons

Sotheby's  
INTERNATIONAL REALTY



## Powder Line Condominiums #4782, 4785

### Estimated Property Taxes

\$8,101.54

### HOA Fees

\$443.57 / month

Includes Heat, Hot Water, Landscaping, Plowing, Sewer,  
Trash, Water, Condo Association Fee

\$97 / month

Includes Cable and Internet

- 196 Stateside Road END UNITS
- Style: 2 Bed / 2 Bath
- Year Built: 2013
- Sq. Footage: 1290
- Exterior: wood siding
- Interior: gas fireplace, first floor laundry, fully furnished
- Roof: Cambridge architectural shingles.
- Flooring: Carpet, tile and vinyl plank.
- Kitchen and Bathrooms: Granite countertops with Hickory cabinets, new kitchen appliances
- Windows: Marvin Integrity
- Fireplace: Propane fireplace with blower.
- Fully Furnished: appliances, furniture, bedding, towels, cookware and dinnerware.
- Storage: Unit comes with lockable covered storage
- Heating System: Propane fired boiler with baseboards
- Septic: Community Sewer
- Water: Community

FOR INFO & TO RESERVE: [smacleod@jaypeakresort.com](mailto:smacleod@jaypeakresort.com) | [jaypeakresort.com/realestate](http://jaypeakresort.com/realestate) | (802) 858-5359





Four  
Seasons

Sotheby's  
INTERNATIONAL REALTY



## Powder Line Condominiums #4783, 4784

### Estimated Property Taxes

\$8,019.71

### HOA Fees

\$443.57 / month

Includes Heat, Hot Water, Landscaping, Plowing, Sewer,  
Trash, Water, Condo Association Fee

\$97 / month

Includes Cable and Internet

- 196 Stateside Road INTERIOR UNITS
- Style: 2 Bed / 2 Bath
- Year Built: 2013
- Sq. Footage: 1290
- Exterior: wood siding
- Interior: gas fireplace, first floor laundry, fully furnished
- Roof: Cambridge architectural shingles.
- Flooring: Carpet, tile and vinyl plank.
- Kitchen and Bathrooms: Granite countertops with Hickory cabinets, new kitchen appliances
- Windows: Marvin Integrity
- Fireplace: Propane fireplace with blower.
- Fully Furnished: appliances, furniture, bedding, towels, cookware and dinnerware.
- Storage: Unit comes with lockable covered storage
- Heating System: Propane fired boiler with baseboards
- Septic: Community Sewer
- Water: Community

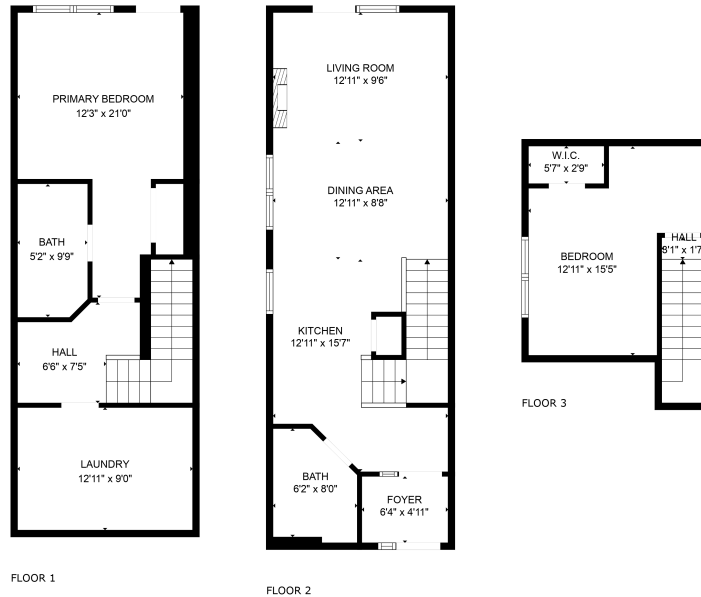
FOR INFO & TO RESERVE: [smacleod@jaypeakresort.com](mailto:smacleod@jaypeakresort.com) | [jaypeakresort.com/realestate](http://jaypeakresort.com/realestate) | (802) 858-5359

# FLOOR PLAN, 196 STATESIDE RD

## POWDERLINE

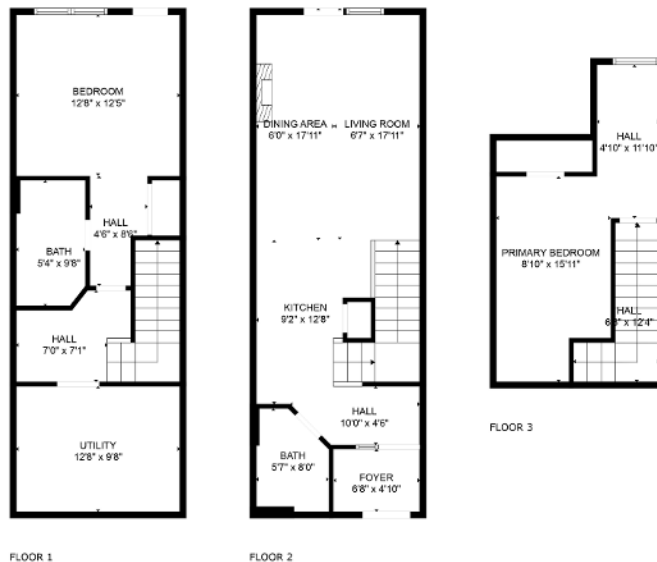


### UNIT #4782 (UNIT #4785 IS A MIRROR IMAGE)



FLOOR PLAN CREATED BY CUBICASA APP. MEASUREMENTS DEEMED HIGHLY RELIABLE BUT NOT GUARANTEED.

### UNIT #4783 (UNIT #4784 IS A MIRROR IMAGE)



**ESTIMATED AREAS**  
GLA BELOW GROUND: 0 sq. ft. EXCLUDED AREAS: 518 sq. ft.  
GLA FLOOR 2: 517 sq. ft. EXCLUDED AREAS: 0 sq. ft.  
GLA FLOOR 3: 253 sq. ft. EXCLUDED AREAS: 38 sq. ft.  
Total GLA: 770 sq. ft. total area: 1326 sq. ft.

FLOOR PLAN CREATED BY CUBICASA APP. MEASUREMENTS DEEMED HIGHLY RELIABLE BUT NOT GUARANTEED.

Scan the code to  
view the 3D Tour

