

THE START OF YOUR JAY PEAK ADVENTURE BEGINS AT POWDER LINE

Jay Peak is proud to offer 1-bedroom and 2-bedroom condominiums at Powderline. These units are fully furnished and conveniently located for access to Jay's year round amenities.



JAY PEAK HOMEOWNER BENEFITS INCLUDE

Discounts to many Jay Peak services
& amenities.

Visit jaypeakresort.com/HowToPow
for details.

PLUS

Two seasons of ski passes (for 2 people)
and turnkey rental income when you
join the rental program.

100 Day
Cash-Back Offer

Valid through 3/31/26



POWDERLINE CONDOMINIUMS

\$440,000 3 LEVEL UNIT #4727

2 BEDROOM / 2 BATHROOM UNIT | 1,287 SQ.FT.

\$440,000 3 LEVEL UNIT #4728

2 BEDROOM / 2 BATHROOM UNIT | 1,287 SQ.FT.

\$340,000 2 LEVEL UNIT #4744

1 BEDROOM / 1 BATHROOM UNIT | 939 SQ.FT.

\$345,000 2 LEVEL END UNIT #4745

1 BEDROOM / 1 BATHROOM UNIT | 939 SQ.FT.

\$495,000 2 LEVEL END UNIT #4782

2 BEDROOM / 2 BATHROOM UNIT | 1,290 SQ.FT.

\$490,000 2 LEVEL UNIT #4783

2 BEDROOM / 2 BATHROOM UNIT | 1,290 SQ.FT.

\$490,000 2 LEVEL UNIT #4784

2 BEDROOM / 2 BATHROOM UNIT | 1,290 SQ.FT.

\$495,000 2 LEVEL END UNIT #4785

2 BEDROOM / 2 BATHROOM UNIT | 1,290 SQ.FT.



Four
Seasons

Sotheby's
INTERNATIONAL REALTY

JAY  PEAK

FOR INFO & SALES: smacleod@jaypeakresort.com | jaypeakresort.com/realestate | (802) 858-5359

JAY PEAK RESORT POWDERLINE



Jay Peak's Powderline Condominiums provide the perfect home-base to recharge between one Jay Peak adventure ending and the next one beginning.



Call a Buyer Representative



Joan McAllister
802.274.0691



Patti Leonard
802.578.0161



Four
Seasons

Sotheby's
INTERNATIONAL REALTY



FOR INFO & SALES: smacleod@jaypeakresort.com | jaypeakresort.com/realestate | (802) 858-5359



Four
Seasons

Sotheby's
INTERNATIONAL REALTY



3% Cash Back*

Cash back only valid with a full price, accepted offer. 3% cash back to be used towards buyer's prepaids and/or closing costs.



Powder Line Condominiums #4727 and #4728

Price

\$440,000

Estimated Property Taxes

\$7,201.37

HOA Fees

\$442.83 / month

Includes Heat, Hot Water, Landscaping, Plowing, Sewer,
Trash, Water, Condo Association Fee

\$97 / month

Includes Cable and Internet

- 19 White Pine Drive
- Style: 2 Bed / 2 Bath
- Year Built: 2013
- Sq. Footage: 1287
- Exterior: wood siding
- Interior: gas fireplace, first floor laundry, fully furnished
- Roof: Cambridge architectural shingles.
- Flooring: Carpet, tile and vinyl plank.
- Kitchen and Bathrooms: Granite countertops with Hickory cabinets.
- Windows: Marvin Integrity
- Fireplace: Propane fireplace with blower.
- Fully Furnished: appliances, furniture, bedding, towels, cookware and dinnerware.
- Storage: Unit comes with lockable covered storage
- Heating System: Propane fired boiler with baseboards
- Septic: Municipal Sewer
- Water: Community

FLOOR PLAN, 19 WHITE PINE POWDERLINE



UNIT #4727
(#4728 IS SIMILAR
BUT DOOR IS ON
THE SIDE, END
UNIT)



FLOOR PLAN CREATED BY CUBICASA APP. MEASUREMENTS DEEMED HIGHLY RELIABLE BUT NOT GUARANTEED.

Scan the code to
view the 3D Tour





Four
Seasons

Sotheby's
INTERNATIONAL REALTY



3% Cash Back*

Cash back only valid with a full price, accepted offer. 3% cash back to be used towards buyer's prepaids and/or closing costs.



Powder Line Condominiums #4744 and #4745

Price

\$340,000 (unit 4744)

\$345,000 (unit 4745)

Estimated Property Taxes

TBD

HOA Fees

\$323.12 / month

Includes Heat, Hot Water, Landscaping, Plowing, Sewer, Trash, Water, Condo Association Fee

\$97 / month

Includes Cable and Internet

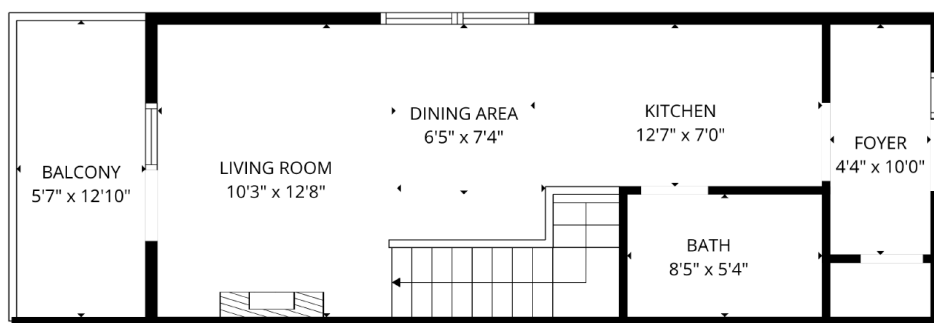
- 16 White Pine Drive
- Style: 1 Bed / 1 Bath
- Year Built: 2013
- Sq. Footage: 939
- Exterior: wood siding
- Interior: gas fireplace, first floor laundry, fully furnished
- Roof: Cambridge architectural shingles.
- Flooring: Carpet, tile and vinyl plank.
- Kitchen and Bathrooms: Granite countertops with Hickory cabinets.
- Windows: Marvin Integrity
- Fireplace: Propane fireplace with blower.
- Fully Furnished: appliances, furniture, bedding, towels, cookware and dinnerware.
- Storage: Unit comes with lockable covered storage
- Heating System: Propane fired boiler with baseboards
- Septic: Municipal Sewer
- Water: Community

FLOOR PLAN, 16 WHITE PINE POWDERLINE

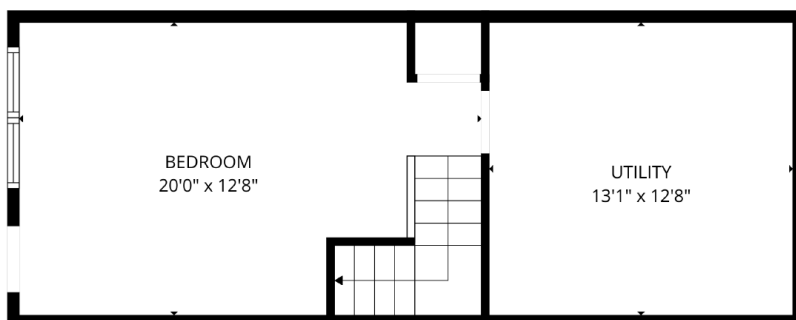


UNIT #4745

(#4743 IS A
MIRROR IMAGE,
#4744 IS SIMILAR
BUT DOESN'T HAVE
A WINDOW IN THE
DINING AREA)



FLOOR 2



FLOOR 1

FLOOR PLAN CREATED BY CUBICASA APP. MEASUREMENTS DEEMED HIGHLY RELIABLE BUT NOT GUARANTEED.

Scan the code to
view the 3D Tour





Four
Seasons

Sotheby's
INTERNATIONAL REALTY



3% Cash Back*

Cash back only valid with a full price, accepted offer. 3% cash back to be used towards buyer's prepaids and/or closing costs.



Powder Line Condominiums #4782, 4785

Price

\$495,000

Estimated Property Taxes

\$8,101.54

HOA Fees

\$443.57 / month

Includes Heat, Hot Water, Landscaping, Plowing, Sewer,
Trash, Water, Condo Association Fee

\$97 / month

Includes Cable and Internet

- 196 Stateside Road END UNITS
- Style: 2 Bed / 2 Bath
- Year Built: 2013
- Sq. Footage: 1290
- Exterior: wood siding
- Interior: gas fireplace, first floor laundry, fully furnished
- Roof: Cambridge architectural shingles.
- Flooring: Carpet, tile and vinyl plank.
- Kitchen and Bathrooms: Granite countertops with Hickory cabinets, new kitchen appliances
- Windows: Marvin Integrity
- Fireplace: Propane fireplace with blower.
- Fully Furnished: appliances, furniture, bedding, towels, cookware and dinnerware.
- Storage: Unit comes with lockable covered storage
- Heating System: Propane fired boiler with baseboards
- Septic: Community Sewer
- Water: Community



Four
Seasons

Sotheby's
INTERNATIONAL REALTY



3% Cash Back*

Cash back only valid with a full price, accepted offer. 3% cash back to be used towards buyer's prepaids and/or closing costs.



Powder Line Condominiums #4783, 4784

Price

\$490,000

Estimated Property Taxes

\$8,019.71

HOA Fees

\$443.57 / month

Includes Heat, Hot Water, Landscaping, Plowing, Sewer,
Trash, Water, Condo Association Fee

\$97 / month

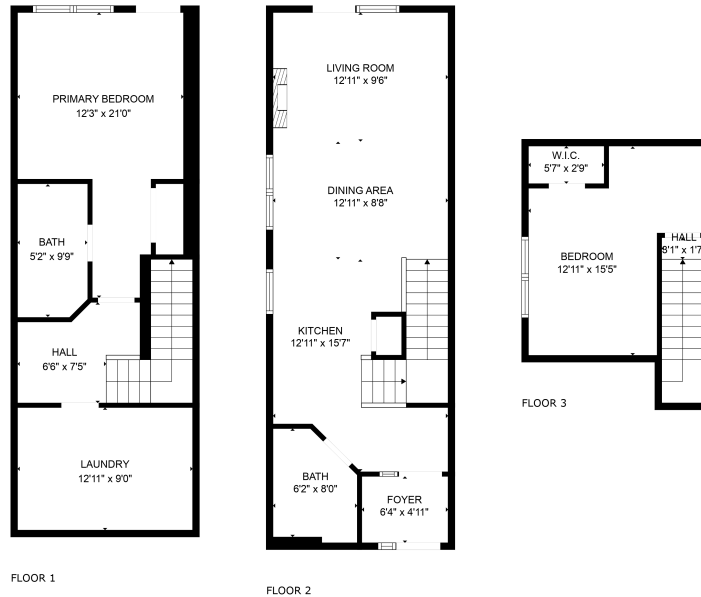
Includes Cable and Internet

- 196 Stateside Road INTERIOR UNITS
- Style: 2 Bed / 2 Bath
- Year Built: 2013
- Sq. Footage: 1290
- Exterior: wood siding
- Interior: gas fireplace, first floor laundry, fully furnished
- Roof: Cambridge architectural shingles.
- Flooring: Carpet, tile and vinyl plank.
- Kitchen and Bathrooms: Granite countertops with Hickory cabinets, new kitchen appliances
- Windows: Marvin Integrity
- Fireplace: Propane fireplace with blower.
- Fully Furnished: appliances, furniture, bedding, towels, cookware and dinnerware.
- Storage: Unit comes with lockable covered storage
- Heating System: Propane fired boiler with baseboards
- Septic: Community Sewer
- Water: Community

FLOOR PLAN, 196 STATESIDE RD POWDERLINE

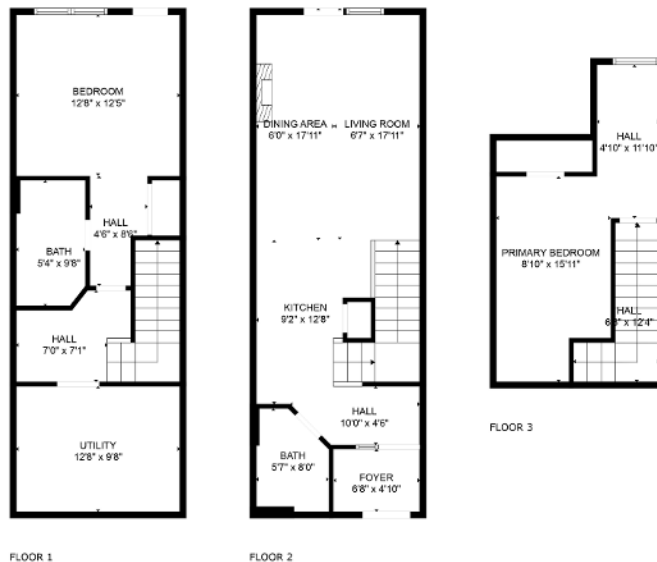


UNIT #4782 (UNIT #4785 IS A MIRROR IMAGE)



FLOOR PLAN CREATED BY CUBICASA APP. MEASUREMENTS DEEMED HIGHLY RELIABLE BUT NOT GUARANTEED.

UNIT #4783 (UNIT #4784 IS A MIRROR IMAGE)



ESTIMATED AREAS
GLA BELOW GROUND: 0 sq. ft. EXCLUDED AREAS: 518 sq. ft.
GLA FLOOR 2: 517 sq. ft. EXCLUDED AREAS: 0 sq. ft.
GLA FLOOR 3: 253 sq. ft. EXCLUDED AREAS: 38 sq. ft.
Total GLA: 770 sq. ft. total area: 1326 sq. ft.

FLOOR PLAN CREATED BY CUBICASA APP. MEASUREMENTS DEEMED HIGHLY RELIABLE BUT NOT GUARANTEED.

Scan the code to
view the 3D Tour

