

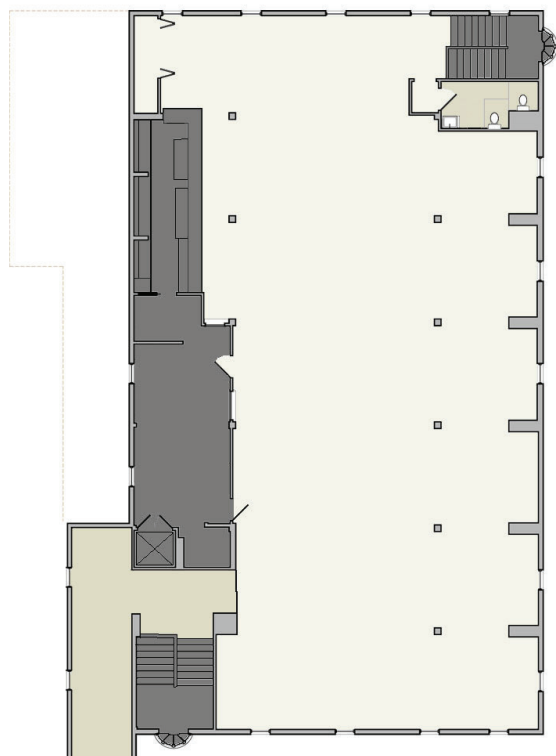
## THE TRAMSIDE BASE LODGE

---

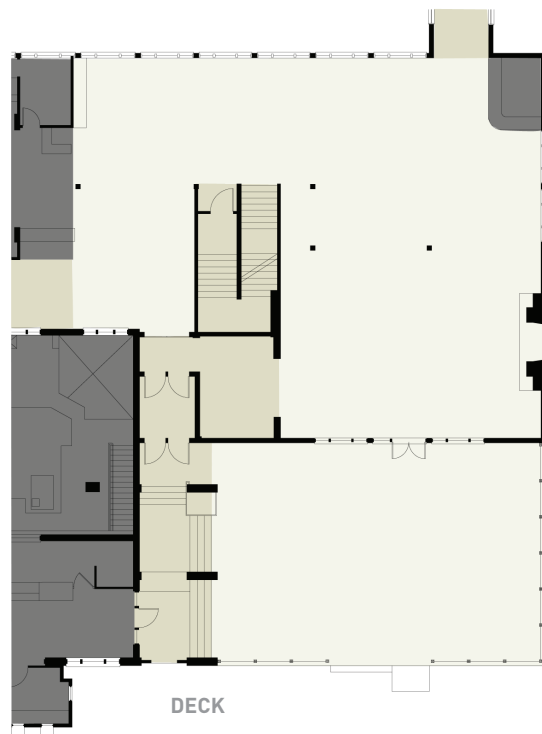


Austria Haus dates back to the beginning of Jay Peak where dark woods and white stucco scathe the walls and cathedral ceilings. It is the hub of Jay Peak, where the International Room, Tram Cafeteria, and Tram Deck reside. Providing ample space for large gatherings, meeting, or events, the Austria Haus offers both seasonal and year round event space.

# THE TRAMSIDE BASE LODGE



**THE INTERNATIONAL ROOM**



**TRAM BASE LODGE & DECK**

TRAMSIDE BASE LODGE		SET-UP STYLE & CAPACITIES				
ROOM	SQUARE FT.	Classroom	Hollow Square	Cocktail Reception	Banquet	Theatre
International Room	2200	192	30	200	200	200
Tram Base Lodge	3260	70	30	-	-	150

## The International Room

The heritage of Jay Peak comes to life in the International Room. With dark wooden beams against a white Austrian finish and arched architectural flares noted throughout the space, the room evokes that of an international feel. Longer than it is wide, this space can comfortably hold 200 persons for any number of set-up styles. It is easily accessible to restaurants, shops, and lodging accommodations.

- With its own event kitchen and stationary bar, guests never have to travel far

## Tram Base Lodge & Deck

The Tram Base Lodge is hub where, come winter, thousands of skiers and riders congregate. During shoulder seasons, the area is easily transformed into meeting and conference space using varying set ups and configurations. Perfect for small meetings, pre-reception wedding cocktail hours and break out space, The Tram Base Lodge is fully licensed for beer, wine and spirits and can accommodate up to 200 people. Adjacent to the Lodge is the Tram Base Patio with sweeping views of the mountain and easy access to the 60-passenger Jay Peak Aerial Tram, the Patio can be used for break out space or is the perfect spot for coffee breaks, cocktail hours or any part of the conference that requires big views.

### Tram Base Lodge

- Seasonal Facility
- Open and Airy
- Ideal for Trade Shows, exhibitor space, and mixers needing ample room in a defined space

### Tram Deck

- Private and Intimate
- Stunning Mountain Views and easy access to the Tram Cafeteria
- Small functions and events